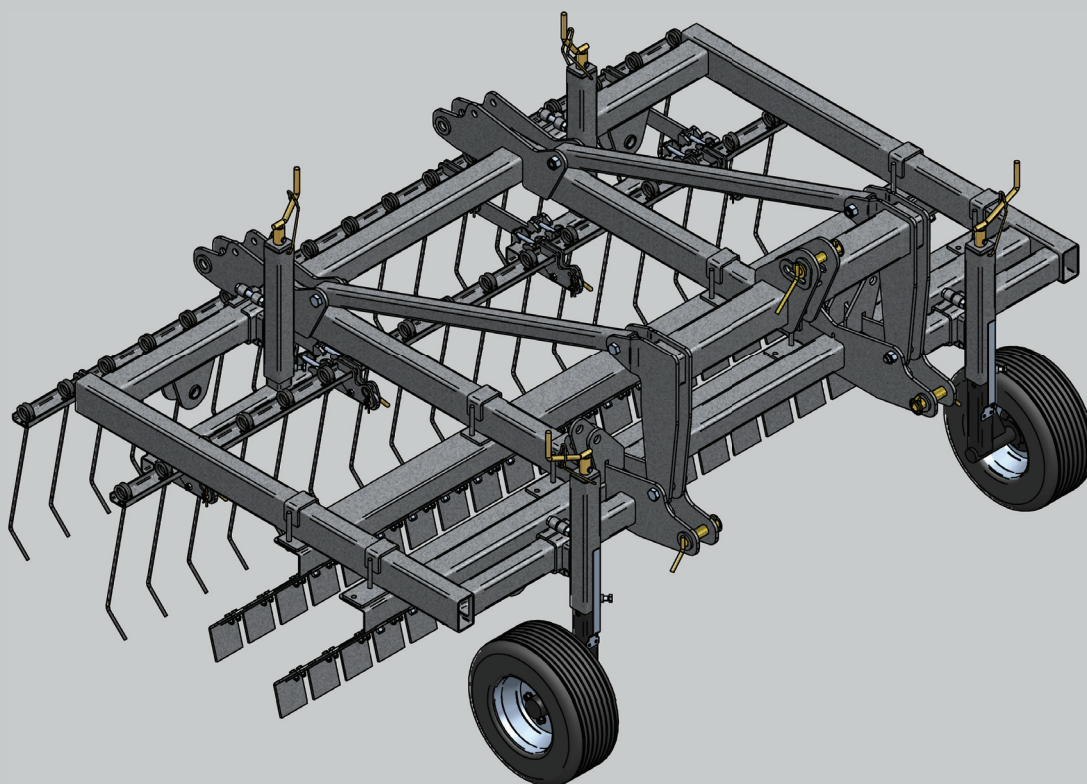


Manual and spare parts catalogue

Pasture Harrow 2,50m - 6,00m working width



Thomas Hatzenbichler Agro-Technik GmbH
Fischering 2, A-9433 St. Andrä
Tel: +43 (0) 4358/2287
Fax: +43 (0) 4358/2208
E-mail: agrotechnik@hatzenbichler.com

OPICO LIMITED
South Road, Bourne, Lincs, PE10 9LG
Tel.: 01778 / 42 11 11 – Fax: 01778 / 42 50 80
ask@opico.co.uk – www.opico.co.uk

2012



contents

	Seite
1. EC Declaration of Conformity	2
2. Safety information	3
3. Intended Use	4
4. Accident prevention	4
5. Transport on public roads.....	5
6. Warranty	5
7. Attaching the pasture harrow to the tractor	6
8. Design and Operation	7
9. Technical data	8
10. Grassland tine	9
11. Support wheel	9
12. Leveling scapers	9
13. Care and maintance	10
14. Adjustment / operation	10
15. Views pasture harrow in transport position.....	11-12
16. Connect the hydraulics	13
17. Spare parts catalogue	14-34



EG Declaration of Conformity

The manufacturer: **Thomas Hatzenbichler**
Agro-Technik GmbH
Fischering 2
A-9433 St. Andrä
Phone: +43 (0) 4358/2287

declares that the following product:

Product: Pasture harrow

Working width _____

Serial number: _____

Year of building _____

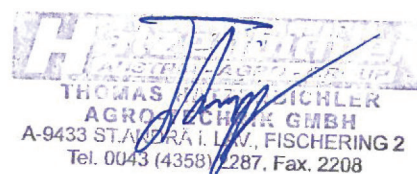
all relevant provisions of the Machinery Directive (2006/42/EC).

To properly implement the EG directives specified in the safety and health requirements of the following standards and / or specifications have been used.

DIN EN ISO 4254-1 Agricultural machinery - Safety - Part 1: General requirements

DIN EN ISO 12100 Safety of machinery - Basic concepts -
Risk assessment and risk reduction

DIN EN 60204-1 Safety of machinery - Electrical equipment of machines Part 1:
General requirements



Fischering, 17.11.2012
Date

Director



2nd. Safety information:



Before starting,
read the instruction manual
and note.



The transport of the ma-
chine is prohibited!



When attaching the
machine and during
operation of the hydraulic
folding ensure that no one
is in between.



Never reach into the crushing
area as long as parts may move!



Stay clear of swinging ran-
ge folding machine parts!

Only operate in the hyd-
raulic lift drop zone if hy-
draulic cylinder is suppor-
ted by a machnical stay.



Beware of high pressure
fluid escaping!



3rd Intended Use

Dear Customer!

We are pleased to congratulate you on your buying decision and wish you much fun and success in working with this device.

Please read necessarily before using this product all the instructions in this manual carefully.

This will avoid, reduce risks, downtime and repair costs, increase reliability and service life of your machine.

With illustrations and information on technical data and dimensions in this manual the manufacturer reserves the right to make changes.

The machine is equipped with state of the art and the recognized security safety rules. Nevertheless, results from the use injury to the user or third parties. Take care of the machine may not cause.

Use the machine in perfect working condition for its intended purpose, safety and risk of danger with respect to user manual!

In particular, problems that can affect safety must be corrected immediately.

The machine may only be used maintained and repaired by individuals who are familiar with and aware of the danger.

Hatzenbichler cannot take responsibility for installation of modification of the machine effecting safety of man or machine.

The machine is designed for normal use for cultivation in the agricultural sector.
Any other or additional use is considered improper.

Shall not be liable for damages resulting from Hatzenbichler.
The risk is borne entirely by the user.

Intended use also includes compliance with the instruction manual and the adherence to the manufacturer's instructions for operation, maintenance and maintenance requirements.

4th. Accident prevention

- The General accident prevention regulations of each country are taken into account.
- When is arrival and uncoupling the machine to the hitch of the tractor injury.
- The unit must be secured to prevent accidental switching off when rolling.
- The device may only be used by anyone on the regulations for public transport streets know.
- The attached machine before hanging off the ground.



5th. Transport on public roads (main provisions)

- For transport on public roads set the stop valve on the cylinders to shut off this will ensure no accidentally opening of the machine.
- The axle load and total weight of the tractor must not be exceeded.
- The attachment must match films with warning signs or red and white diagonal bar (according to DIN, or relevant standards) are identified.
- Transport hazardous or dangerous parts must be covered and also with warning signs or sheets be identified.
- Warning signs or slides to max. be 1.50 m above the roadway while driving.
- Illumination devices of the tractor must not be obscured by the unit, otherwise illumination must be attached to the attachment also.
- The ability to steer the tractor may not be impaired or diminished.
- The device may only be used on the public highway by someone who knows the regulations fully.
- For transport on public roads with a max. 25 km/h.

6th. Warranty

Check the unit immediately upon acceptance for possible shipping damage. Subsequent complaints from transit damage can not be accepted.

We give a one year warranty from date of shipment (your invoice or delivery note as proof of valid). This warranty is valid in the case of material or construction failure and does not cover parts that are damaged by normal-or excessive wear.

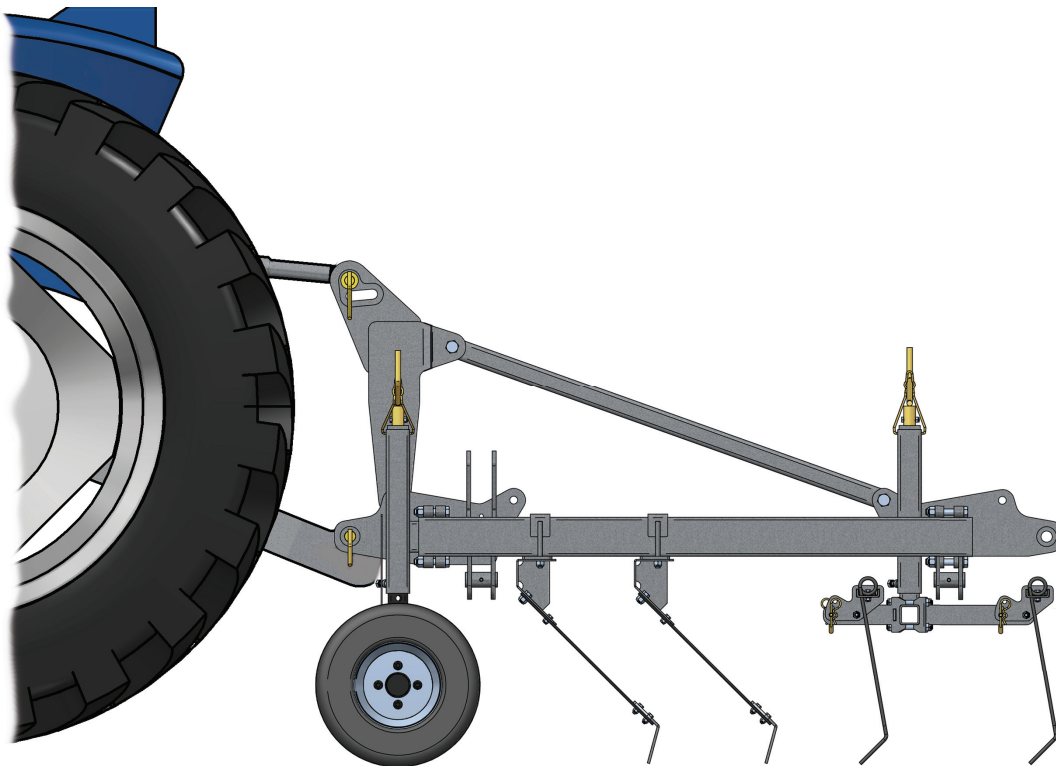
The warranty is void

- if damage is caused by external forces
- when an operation error
- if the specified KW/horsepower limit is exceeded
- if the device is changed without our consent, extended, or is equipped with foreign parts.

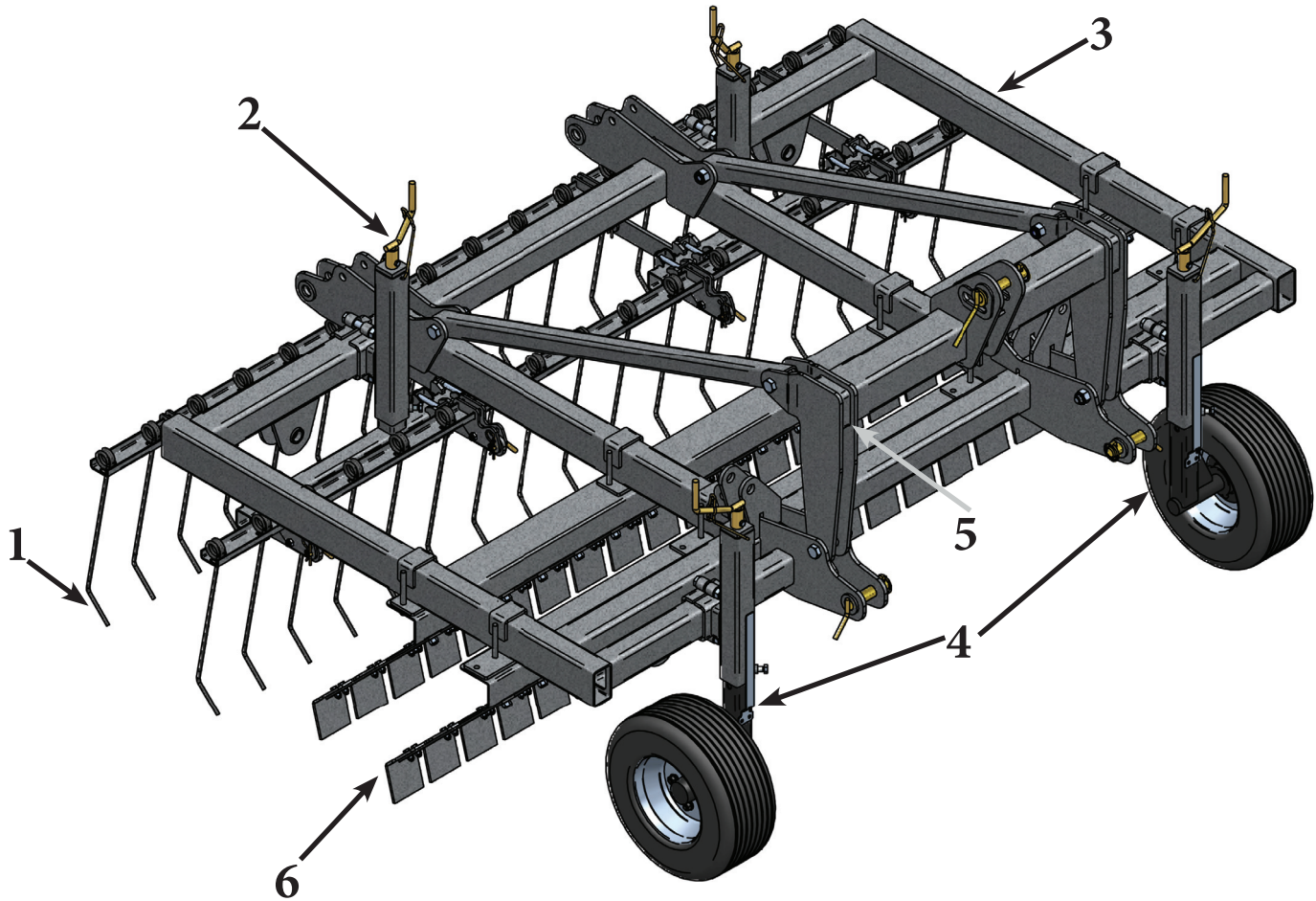
7th Attaching the pasture harrow to the tractor

- The air pressure in the tractor rear tyres should be sufficient for use
- Under difficult operating conditions wheel weights might be advantageous. See also operating instructions of the tractor manufacturer.
- Enhance the tractor's front equipment with sufficient ballast to ensure the steering and braking ability.
- Tractor lift arms must be adjusted left and right at the same height.
- Attach the harrow to the 3-point hitch of the tractor.
- Connect the hydraulic hoses (for devices with hydraulic folding) to double-acting valves.

Note when connecting to the tractor and machine hoses are depressurized



8th Design and operation



1. Tine $\varnothing=8\text{mm}$
2. Adjustable support for harrow bar
3. Base frame galvanized
4. Adjustable spindle wheels
5. Three-point hitch
6. Grazing plates $b=95\text{mm}$



Operation of the Pasture Harrow:

The management and maintenance of grassland is the foundation to provide optimum roughage.

The Hatzenbichler pasture harrow is used for incorporation of slurry and manure at the same time as harrowing weeded grassland.

The whole frame is galvanised to minimise corrosion from slurry and manure.

The optimal constructed levelling plates with a width of 95mm, these are individually mounted on the guide rail they incorporate slurry and manure, and also level out molehills.

The aggressiveness of the levelling plates is adjusted by means of screw adjustment tractor hydraulic arm setting.

The specially shaped tines with vibration effect, “clean“ the grassland of moss-covered and matted places without damage the grassland.

The tine aggressiveness can be set by hole 10 pin adjustment.

The tines can be adjusted by means of adjustment of spindle separately from the levelling plates.

Specifically for grassland Hatzenbichler tines with a diameter of 7 mm and a length of 410mm (on request tine 8mm diameter) are manufactured oil-tempered hardened spring wire, which makes them very durable and sturdy. The tines can be replaced individually.

The pasture harrow with 5m and 6m working width are hydraulic folding.

9th Technical data:

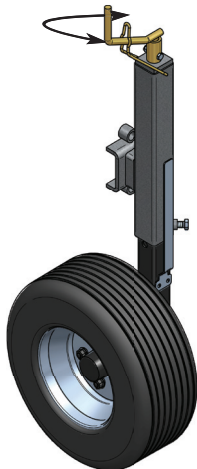
Working width:	2,50m	5,00m	6,00m
Weight approximately in kg:	510 kg	940 kg	1050 kg
Transport width:	2,50m	3,00m	3,00m
HP:	40	80	100
Diameter of tines:	7mm	7 mm	7 mm
Lenght of the tines:	410mm	410 mm	410 mm
Pieces hydraulic cylinders		2	2

10th Hatzenbichler grassland tine:



- The special grassland tine are made of oil tempered spring wire (which is also used in the motor industry).
- Tines therefore have a particularly long service life.
- Tines are changed seperatley
- vibration effect
- Ø= 7mm or 8mm
- tine length = 410mm
- special spring coil

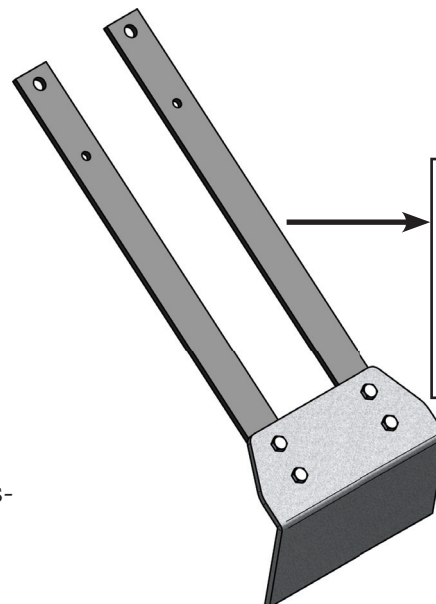
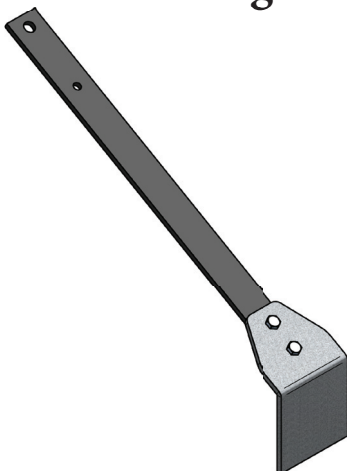
11th Support Wheels



- The spindle adjustable support wheels serve firstly.
As a safety depth control for field operation

1. The rotation handle to set depth.
2. Set the desired pressure
- Attention!!** Both wheels must be on the same level
3. Secure setting with flip over handle.

12th Leveling Scapers



If desired, this can be mounted leveling scapers with a width of 215mm.

- Width of 95mm and a length
- This particular attack angle optimum towing grassland is given.
- By special spring plate - not bend and break the streak plate.
- The leveling scapers are individually mounted on the guide rail.
- These can also be replaced individually.



13th Care and Maintenance

- For maintenance and service work mount the machine on level and stable ground to prevent from rolling away.
- **After cleaning, all hydraulic lines for leaks and loose connections check (About every 50 hours, the hydraulic power packs and hoses checked).**
- **Check damage or wear. Any defects rectified immediately.**
- **Check nuts and bolts regularly for tightness and tighten if necessary. (On new units every 3 hours and again after 20 hours.)**
- The lubrication points on the joints and bearings greased regularly (approximately every 10 hours).
- **Do not use high pressure washers for cleaning bearings and hydraulic parts used.**
- During the winter, protect the equipment with environmentally friendly means against rust.
- **When taking machine off protect from weather and ensure no unnecessary pressure on machine parts, (tines, etc.).**

14th Adjustment / operation

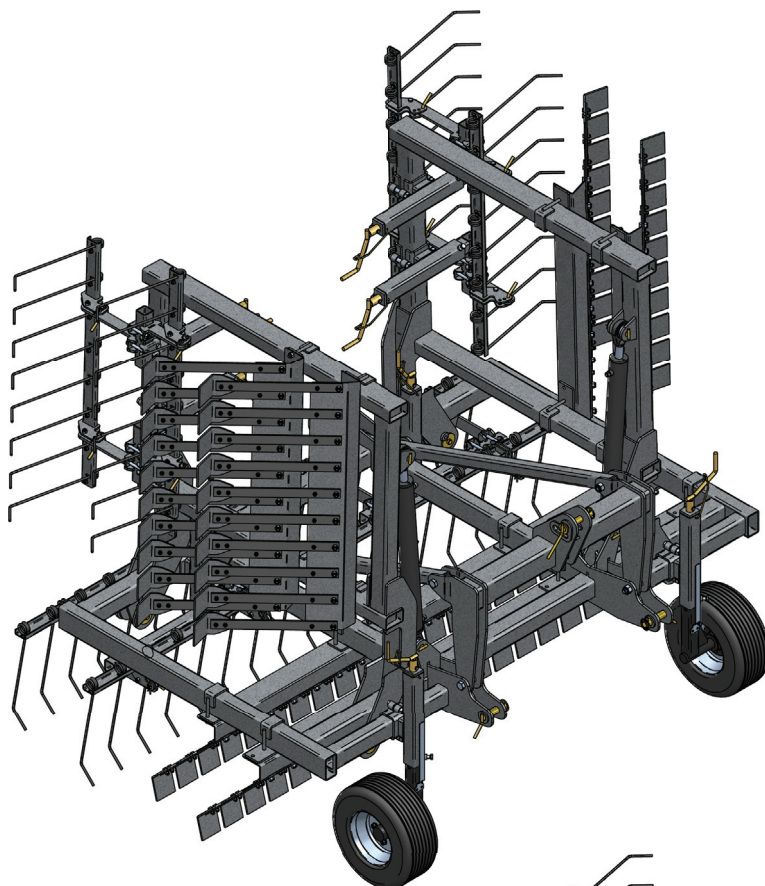
When coupling may ensure there are no people between the tractor and machine.

Attach the machine:

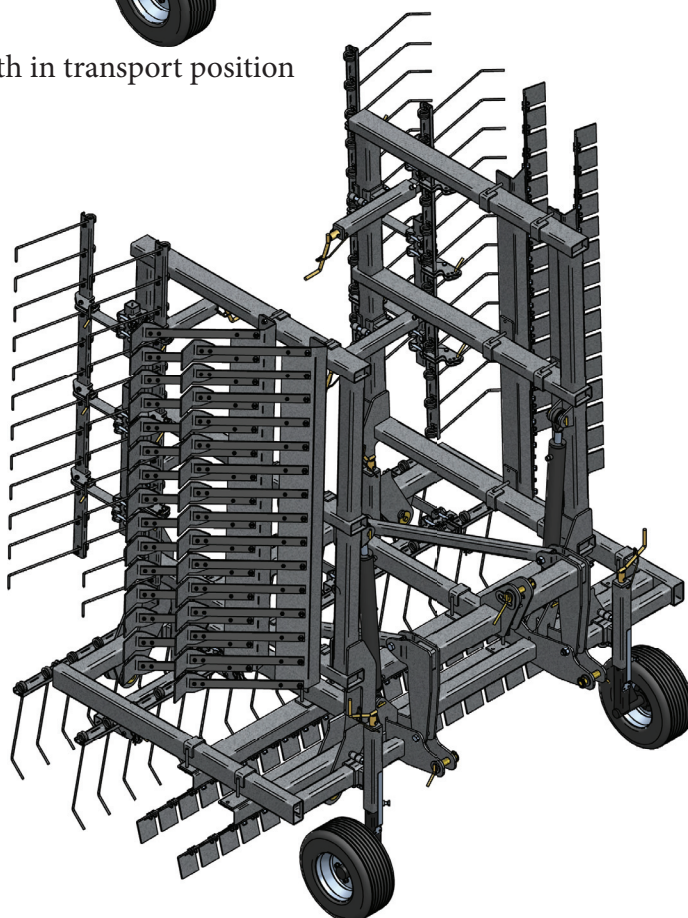
- The machine, depending on the equipment at the three-point.
- Hydraulic lines connect
- Connect the plug for the lights and functioning
- Lift the machine.
- Remove the jack stand (if any)
- Fold sides (for transport) or fold out for the working position.

15th Views Pasture Harrow

Pasture Harrow 5m working width in transport position

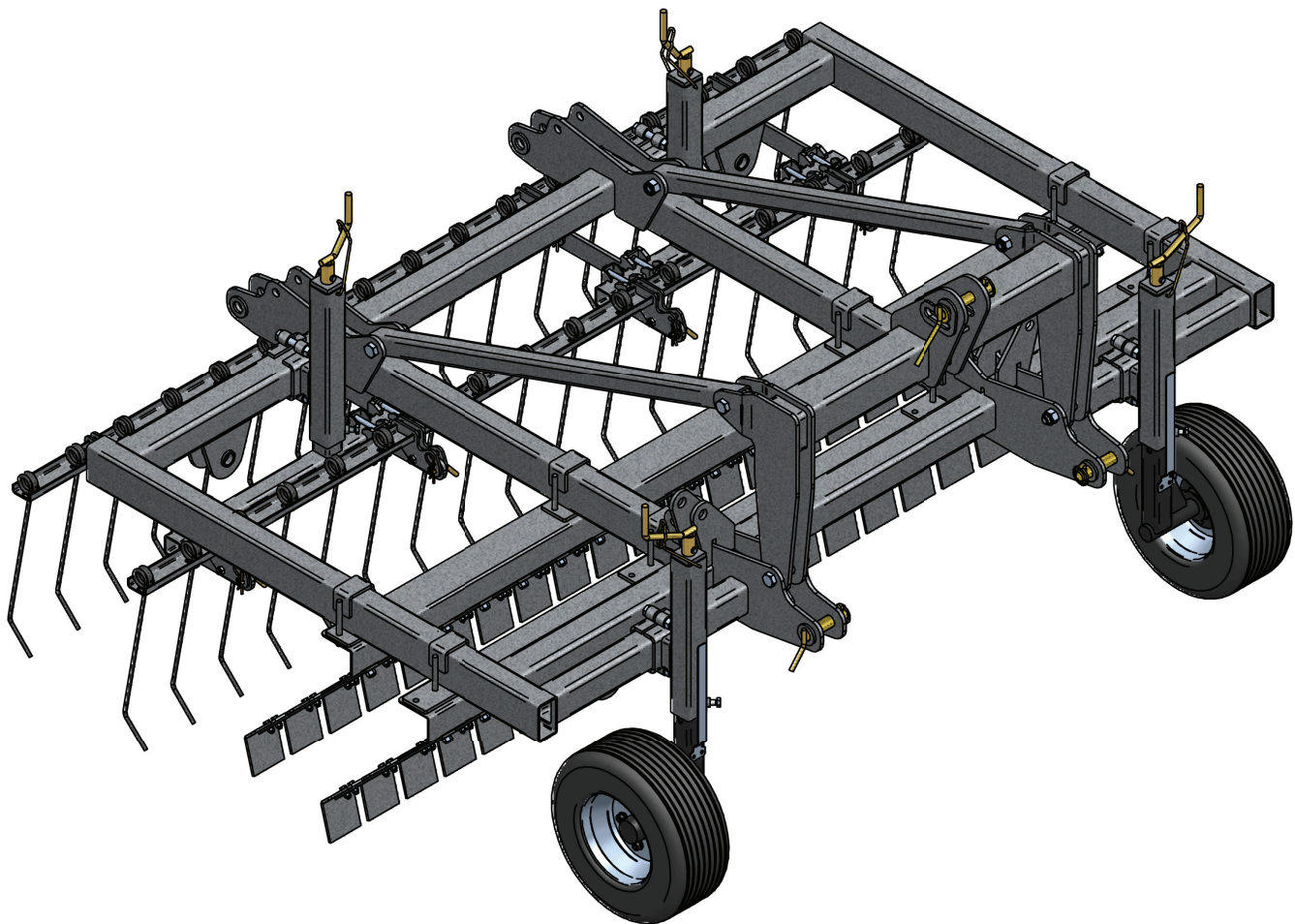


Pasture Harrow 6m working width in transport position



Views Pasture Harrow

Pasture Harrow 2,50m working width



16th Connect the hydraulics:

Hydraulic connect only when the machine is hydraulic and unit pressure.

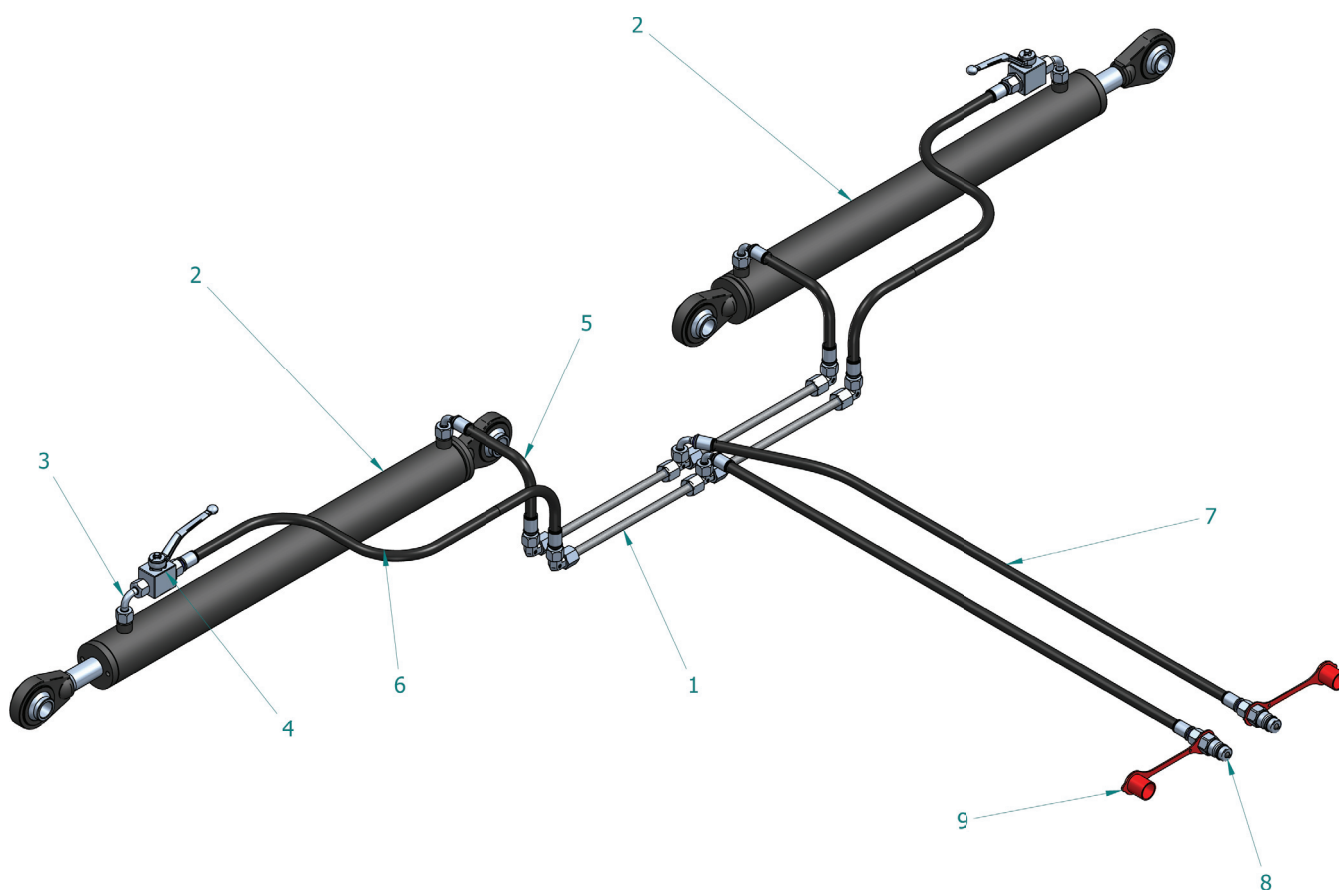
Throttling for all hydraulic movements controller before stop of the machine parts (minimise hydraulic speed).

To set the device to fold it must be connected to a double-acting control device.

Fold only on solid level ground.

When folding movement of the side wings always keep in mind - Warning Danger of tipping!

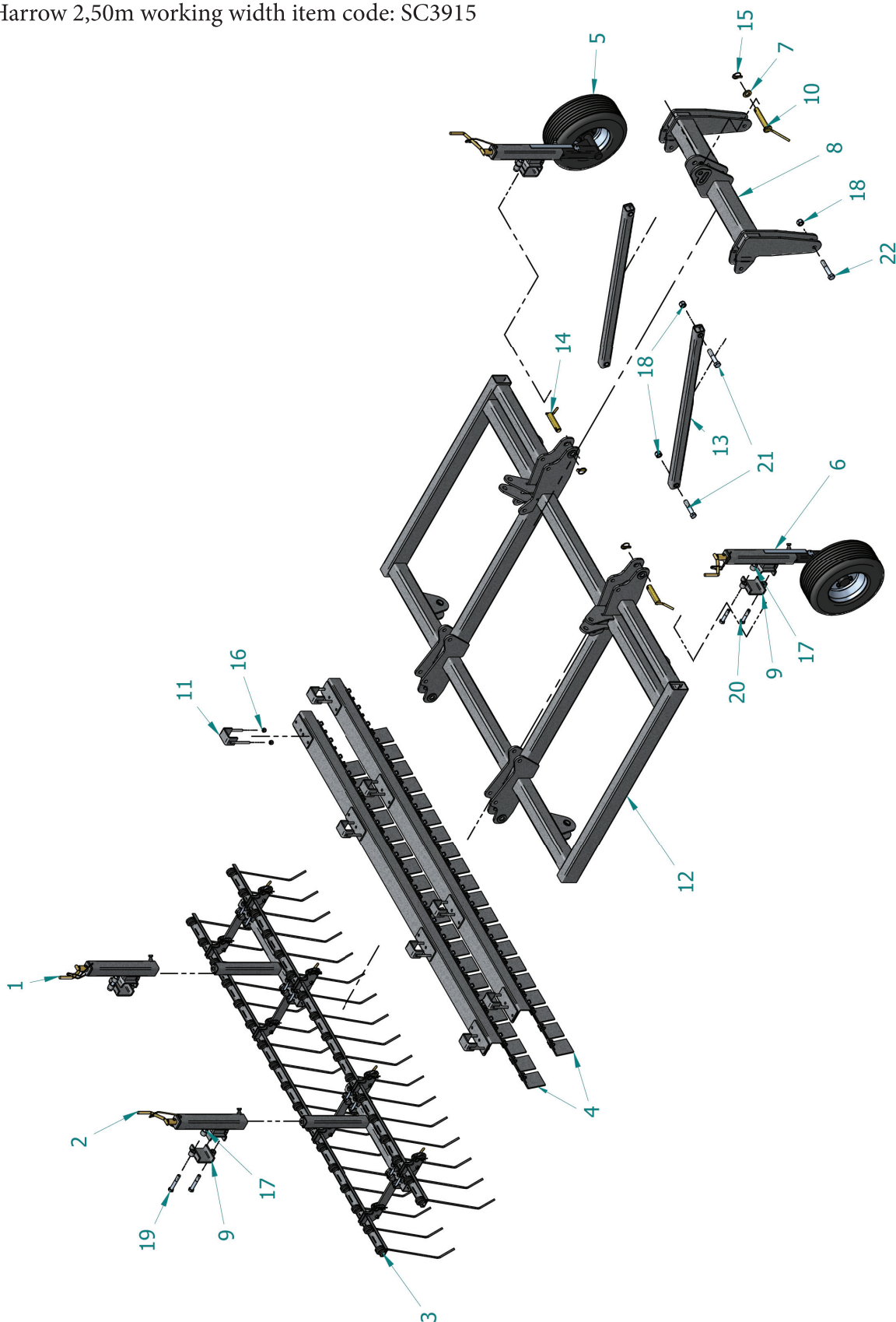
The side wings fold up until all parts have reached the stop - with the shut-off valve secure side wings.



item code	item number	designation	quantity
1912110001	1	hydraulic line 12L f. pasture harrow	1
1912010008	2	Cylinder 60x30x600	2
1912030003	3	12L- Angle Gland	1
1912060001	4	stopcock 12L - 18x1,5	1
1912020014	5	Hydr. hose l=450mm	1
1912020013	6	Hydr. hose l= 950mm	1
1912020015	7	Hydr. hose l=1500mm	1
1912030001	8	12L Push Pull Connector	1
1912040001	9	Dust cap red	1

17TH SPARE PART LIST PASTURE HARROW

Pasture Harrow 2,50m working width item code: SC3915



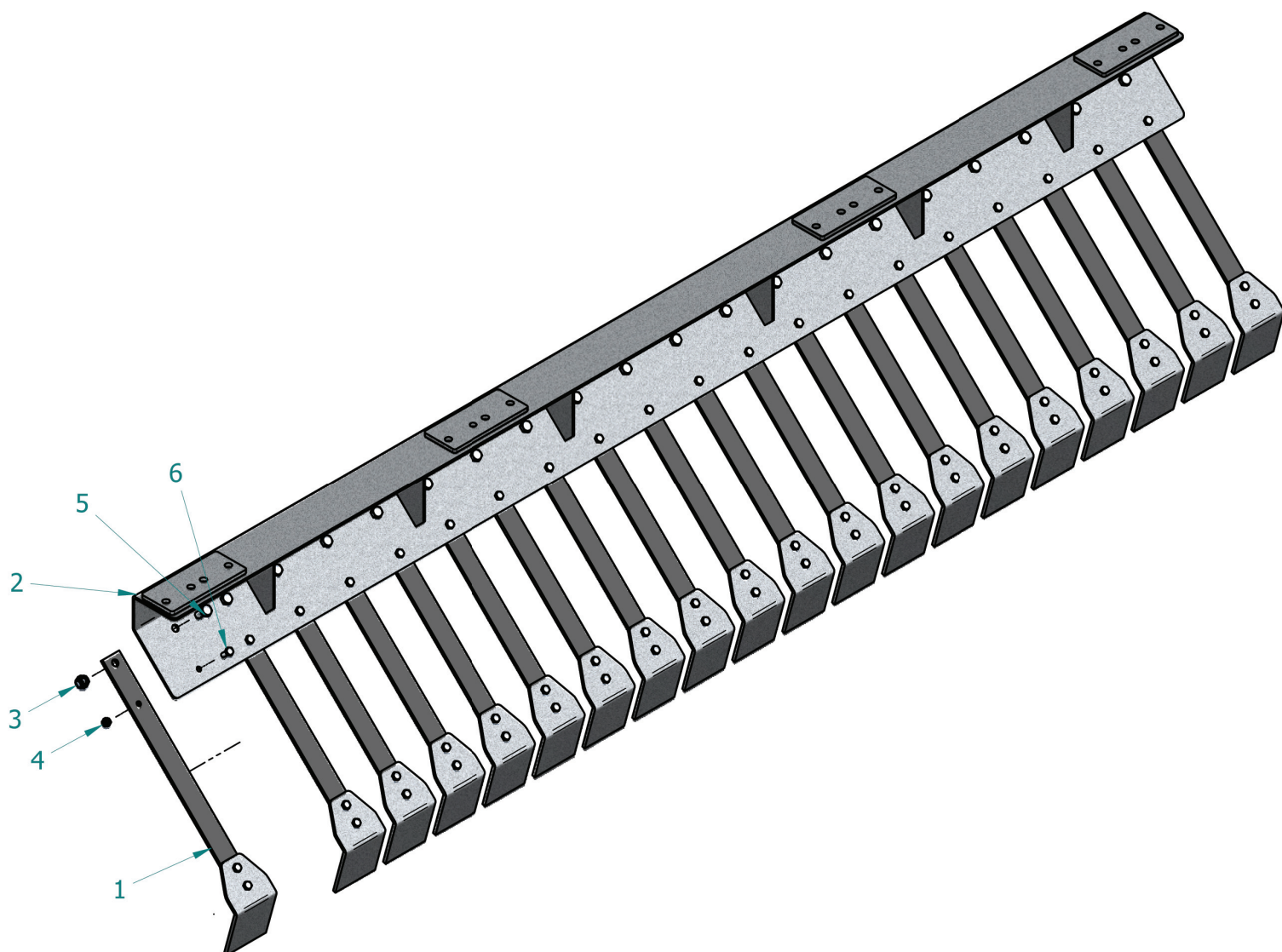
17TH SPARE PART LIST PASTURE HARROW

Pasture Harrow 2,50m working width item code: SC3915

item code	item number	designation	quantity
0114020001	1	Holder for trailing harrow 2,50m	1
0114020001	2	Holder for trailing harrow 2,50m	1
0114010005	3	Trailing harrow for 2,50m	1
0114030001	4	grazing plate frame-95 f. 2,50m	2
0115010001	5	Support wheel left	1
0115010002	6	Support wheel right	1
1908020004	7	Disc A25 - 6mm	1
0101150002	8	3-Point	1
1913020007	9	Blind plate FR80	4
1903020004	10	bolt OL 25x122,5	1
1913030001	11	bolt UL 25x100	2
0101150001	12	terminal block FR60	8
0101150003	13	Frame for middle part 2,50m	1
1903010002	14	Brace for pasture harrow	2
1904010002	15	linch DIN 11023 10x45	3
1902010003	16	hexagonal nut DIN 982-M12	4
1902010008	17	hexagonal nut DIN 982-M16	8
1902010001	18	hexagonal nut DIN 982-M20	6
1901010046	19	hexagonal screw DIN 931-M16x100	4
1901010047	20	hexagonal screw DIN 931 M16x80	3
1901010048	21	hexagonal screw DIN 931 M20x100	4
1901010004	22	hexagonal screw DIN 931 M20x110	2

LEVELING SCAPERS FOR 2,50M WORKING WIDTH

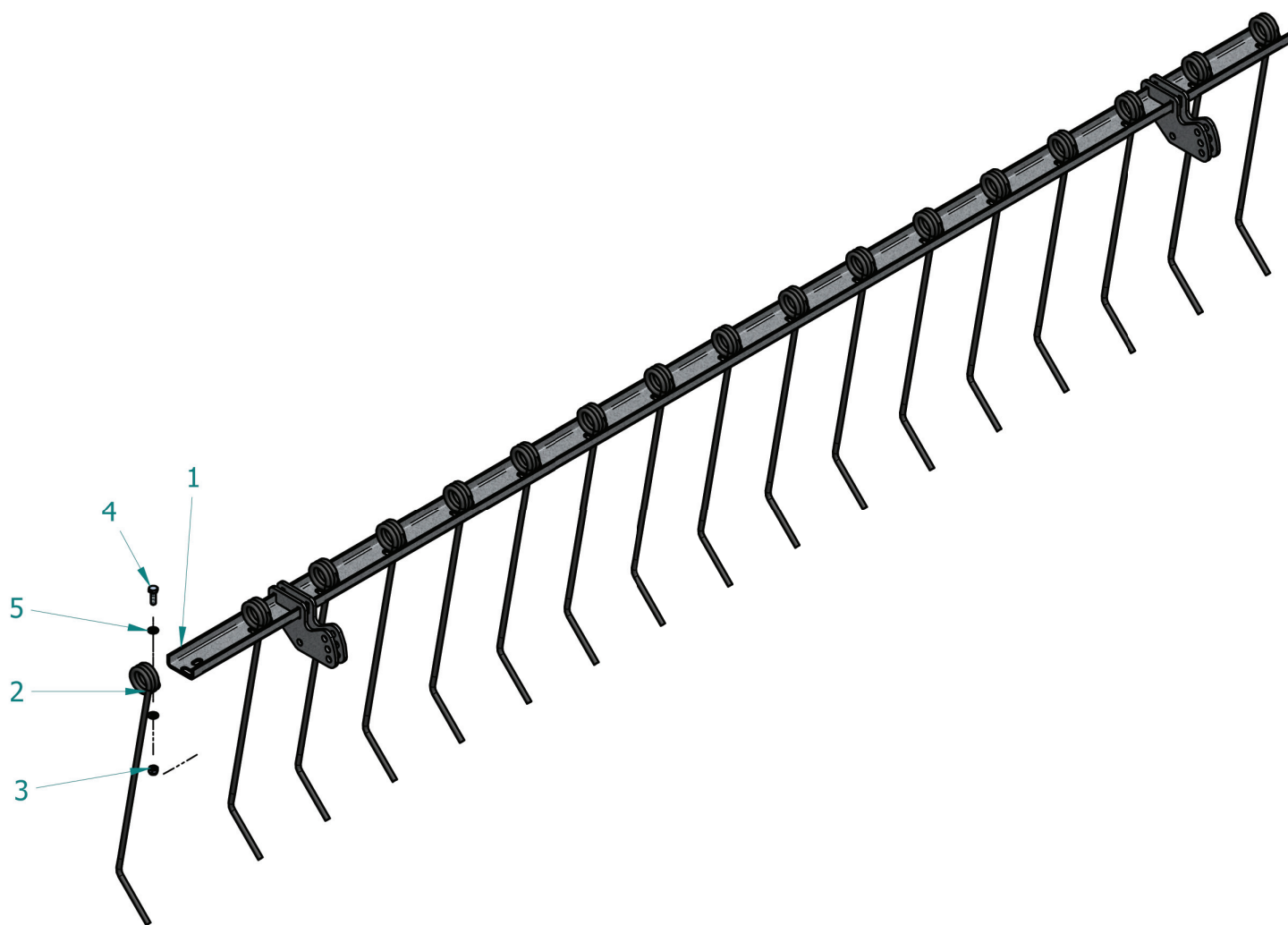
Complete item code: 0114030001



item code	item number	designation	quantity
1909050001	1	Leveling scapers-95	20
0114030010	2	Leveling scapers holder f. 2,50m middle part	1
1902010003	3	hexagonal nut M12	20
1902010002	4	hexagonal nut M8	20
1901010005	5	hexagonal screw M12x25	20
1901010049	6	hexagonal screw M8x20	20

HOLDER COMB HARROW FOR 2,50M WORKING WIDTH

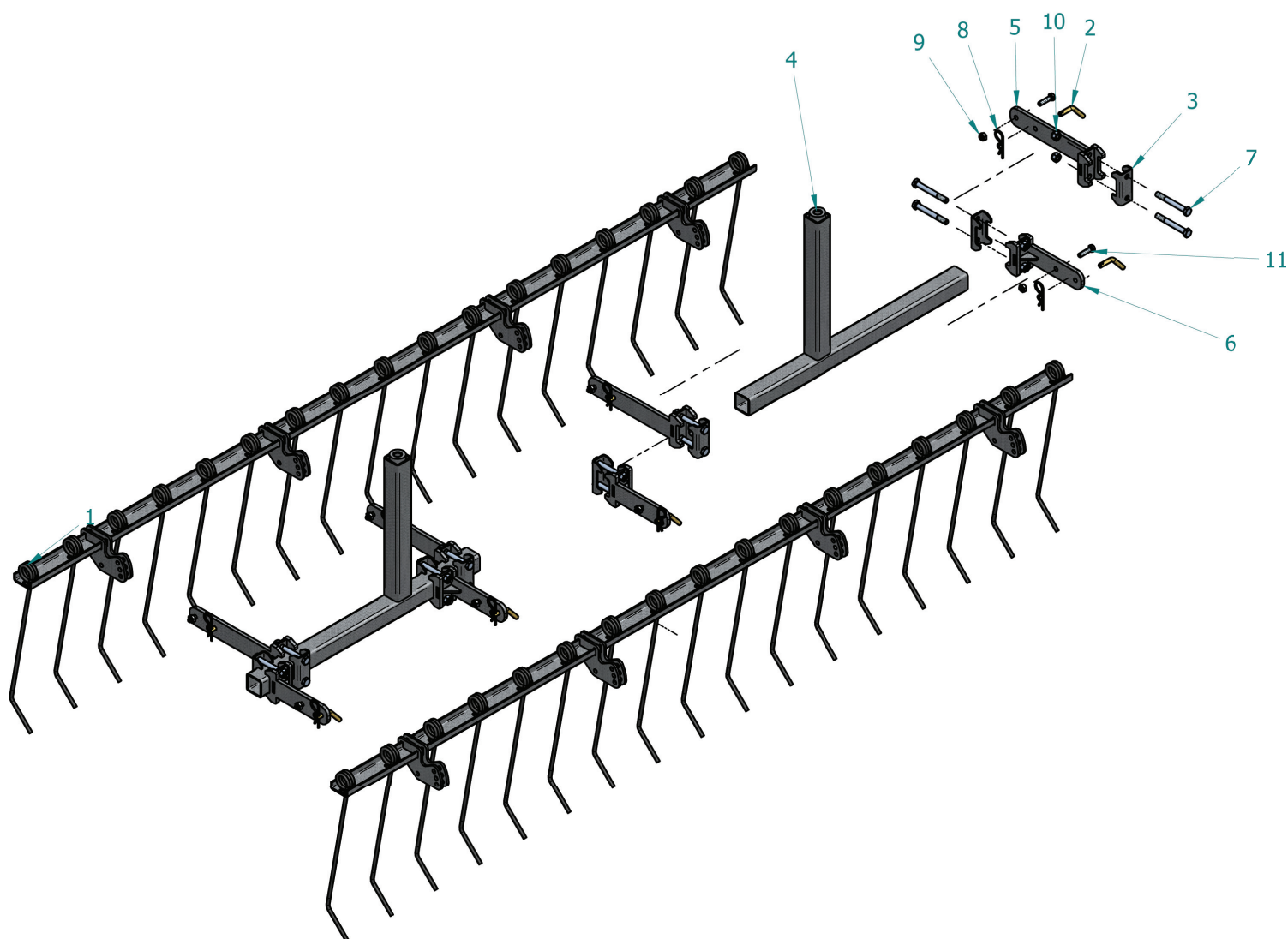
Complete Art. Nr.: 0114010008



item code	item number	designation	quantity
0114010015	1	tine carrier-150 f. 2,50m	1
1909030007	2	tine 7mm	17
1902010002	3	hexagonal nut M8	17
1901010032	4	hexagonal screw M8x25	17
1908010004	5	disc DIN125-A8,4	18

COMB HARROW FOR 2,50M WORKING WIDTH

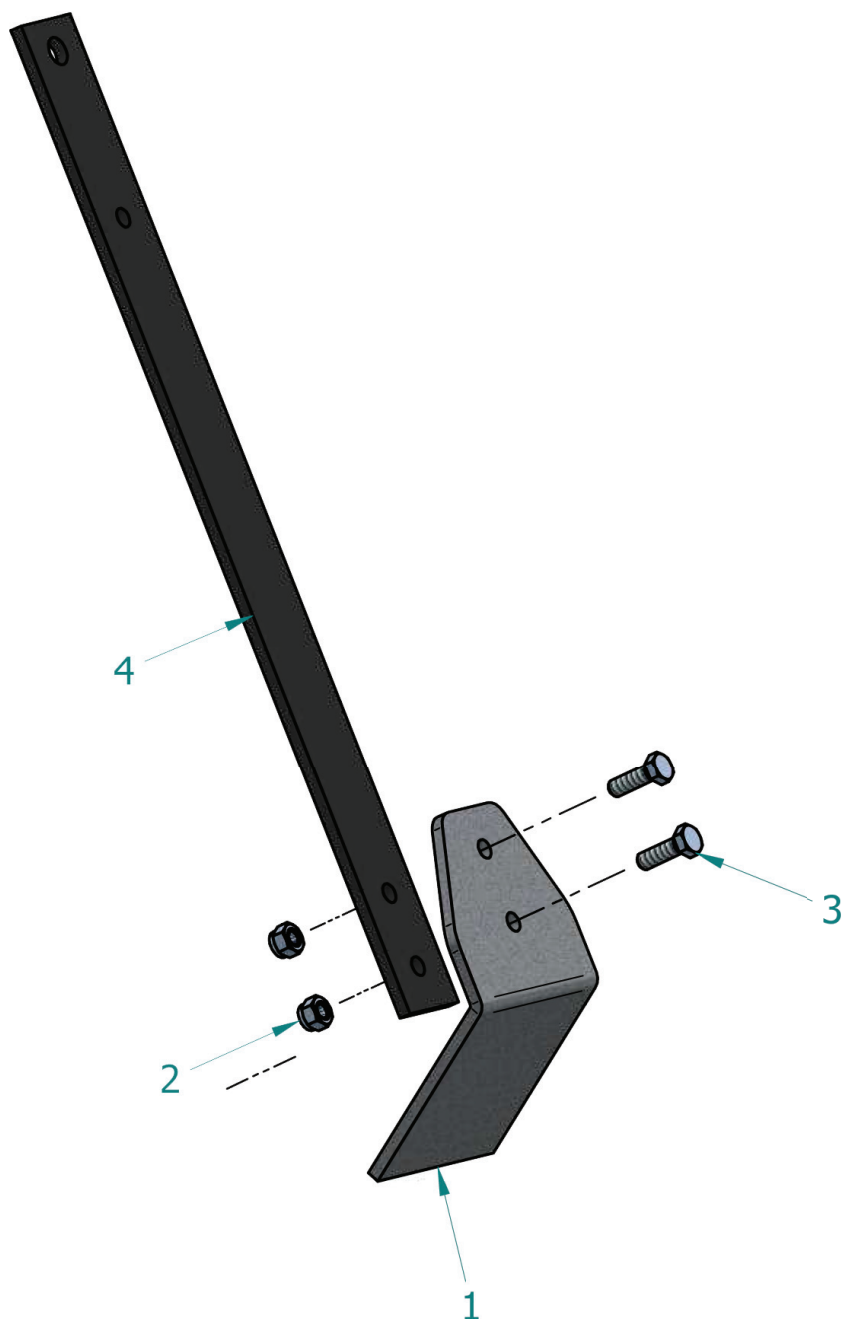
Complete item code: 0114010005



item code	item number	designation	qunatity
0114010008	1	tine carrier -150 f. 2,50m	2
1903030009	2	bolt AB 10x25	8
1913010004	3	clamping plate FR50	8
0114010010	4	Insertion part f. trailin harrow - long	2
0114010012	5	holder f. tine carrier - long	4
0114010011	6	holder f. tine carrier - short	4
1901010010	7	hexagonal screw M12x100	16
1904020002	8	Linch pin 4mm	8
1902010005	9	hexagonal nut M10	8
1902010003	10	hexagonal nut M12	16
1901010031	11	hexagonal screw M10x40	8

LEVELING SCAPERS-95MM

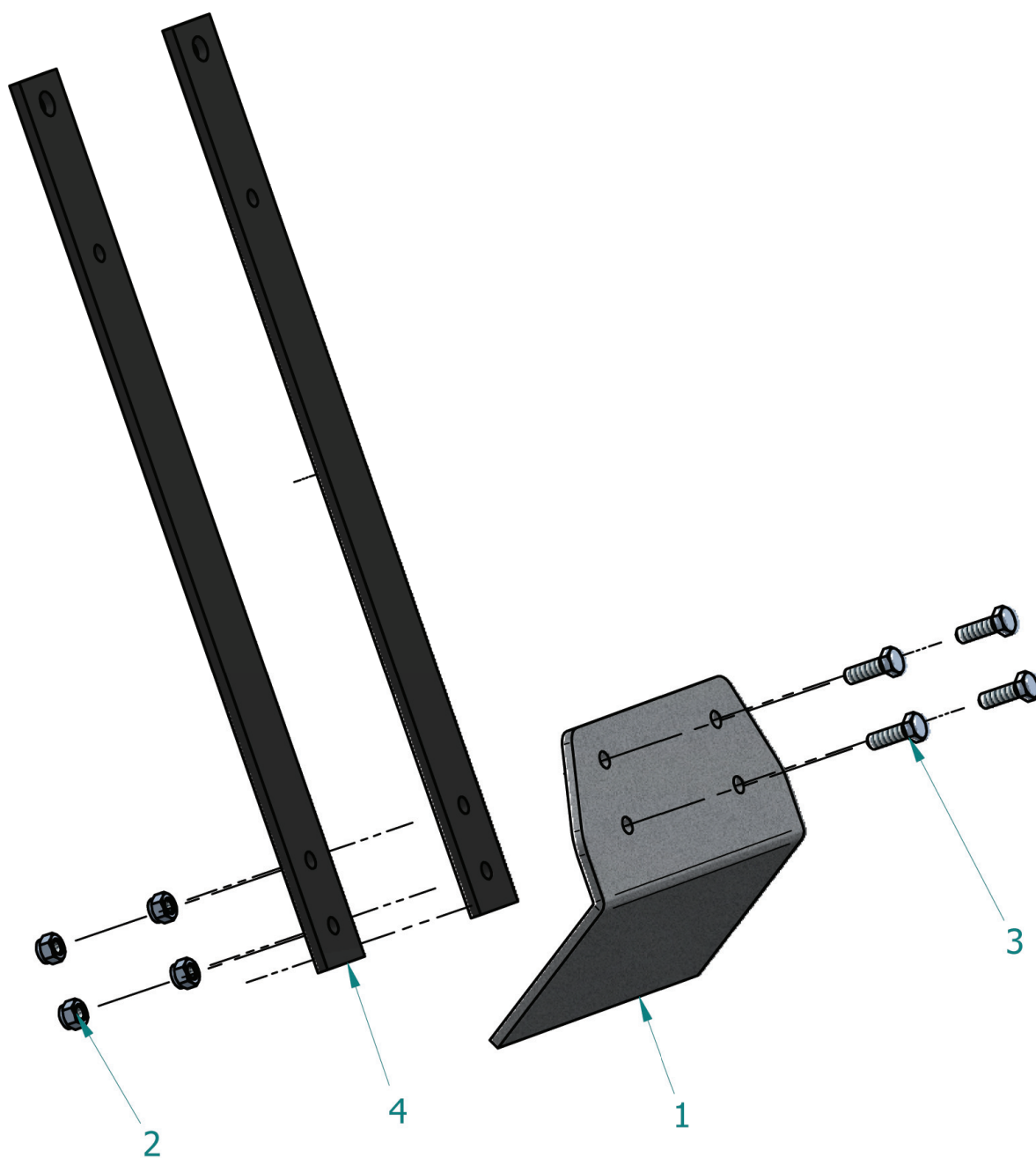
complete item code: 1909050001



item code	item number	designation	quantity
1909050004	1	Leveling scapers-95	1
1902010002	2	hexagonal nut M8	2
1901010032	3	hexagonal screw M8x25	2
1909050003	4	spring plate	1

LEVELING SCAPERS-215MM

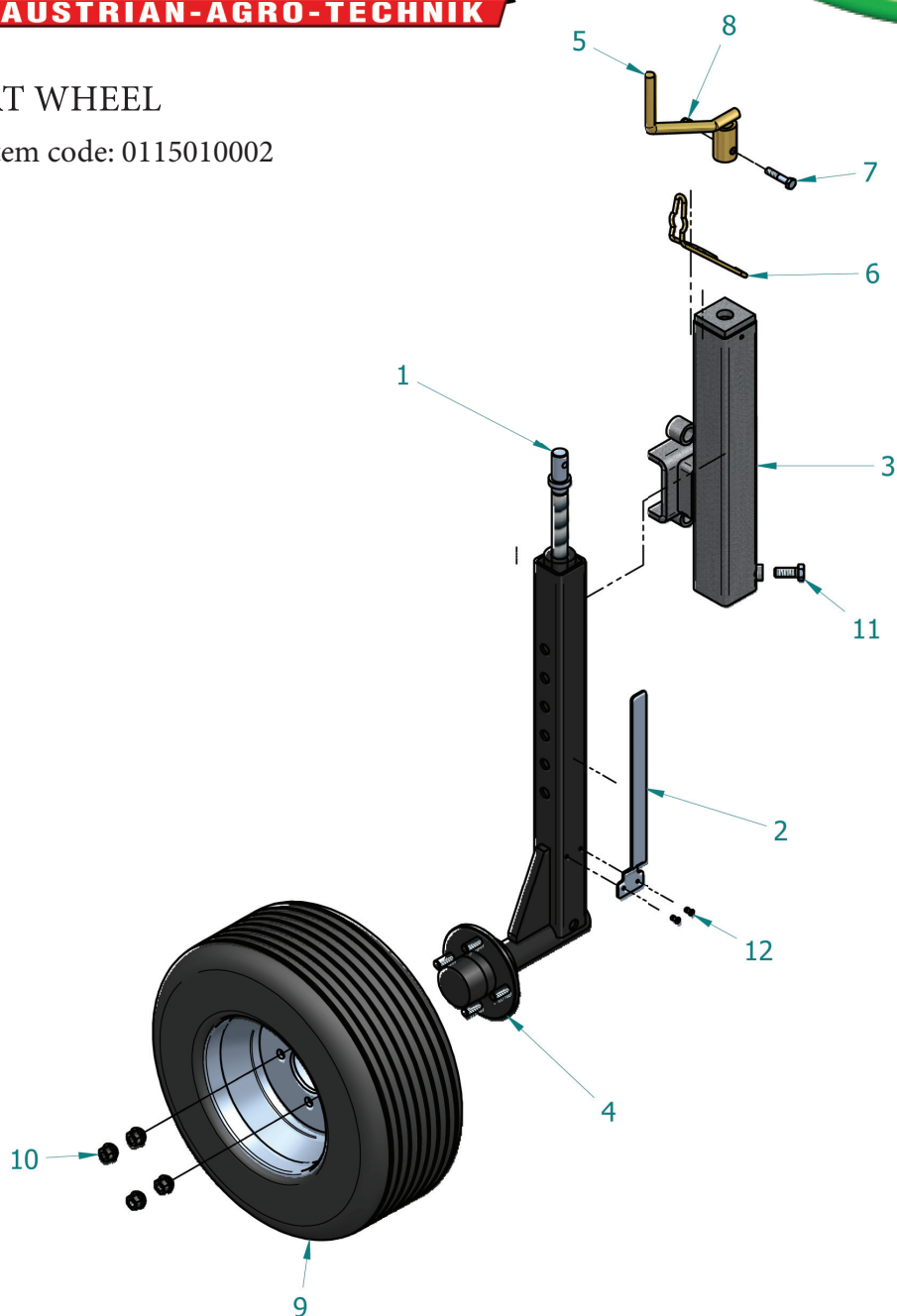
complete item code: 1909050002



item code	item number	designation	quantity
1909050005	1	Leveling scapers-215	1
1902010002	2	hexagonal nut M8	4
1901010032	3	hexagonal nut M8x25	4
1909050003	4	spring plate	2

SUPPORT WHEEL

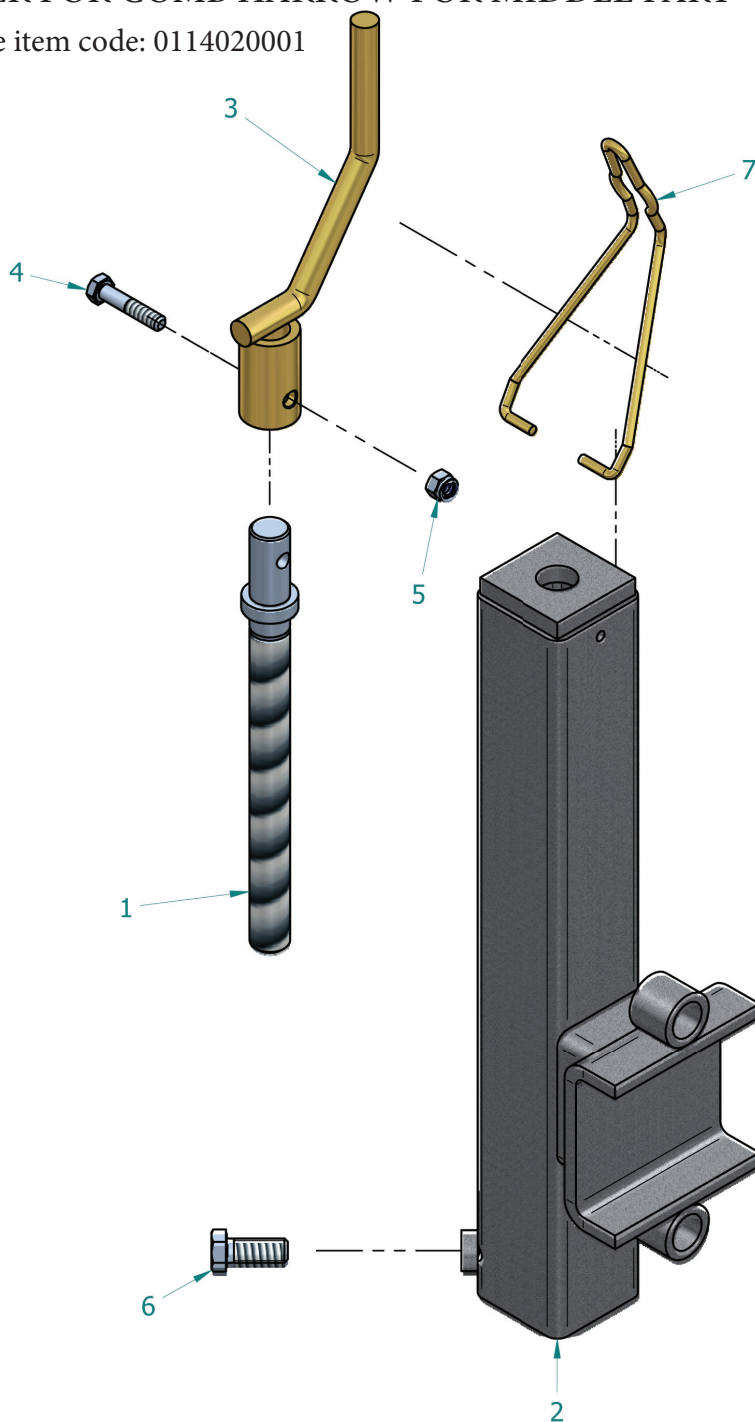
complete item code: 0115010002



item code	item number	designation	quantity
0309020003	1	Spindle f. support wheel	1
1906080001	2	Scale for wheel lever	1
0115010003	3	holder for trailin harrow and support wheel	1
1914010006	4	Hub with rubber support for stem	1
0309020004	5	crank f. trailin harrow and support wheel	1
0309020008	6	crank fixation FR60	1
1901010003	7	hexagonal screw M8x40	1
1902010002	8	hexagonal nut M8	1
1914030001	9	wheel 16x6,5-8	1
1902030001	10	Wheel Nut M12	4
1901010035	11	hexagonal screw M12x30	1
1904050001	12	rivets A4x10	2

HOLDER FOR COMB HARROW FOR MIDDLE PART

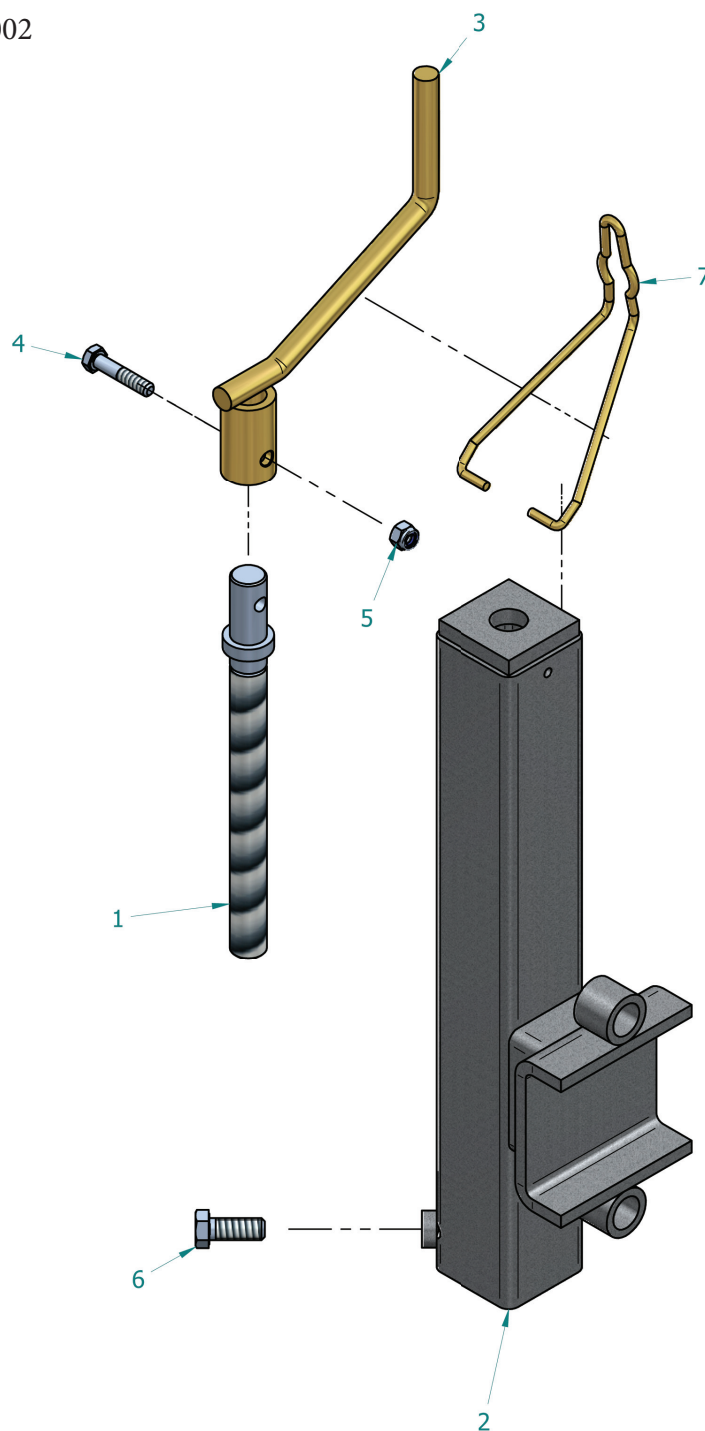
Complete item code: 0114020001



item code	item number	designation	quantity
0309020003	1	spindle for support wheel	1
0115010003	2	holder for trailin harrow and support wheel	1
0115010004	3	crank for trailin harrow and support wheel	1
1901010003	4	hexagonal screw M8x40	1
1902010002	5	hexagonal nut M8	1
1901010035	6	hexagonal screw M12x30	1
0309020008	7	crank fixation FR60	1

HOLDER FOR COMB HARROW FOR SIDE PART

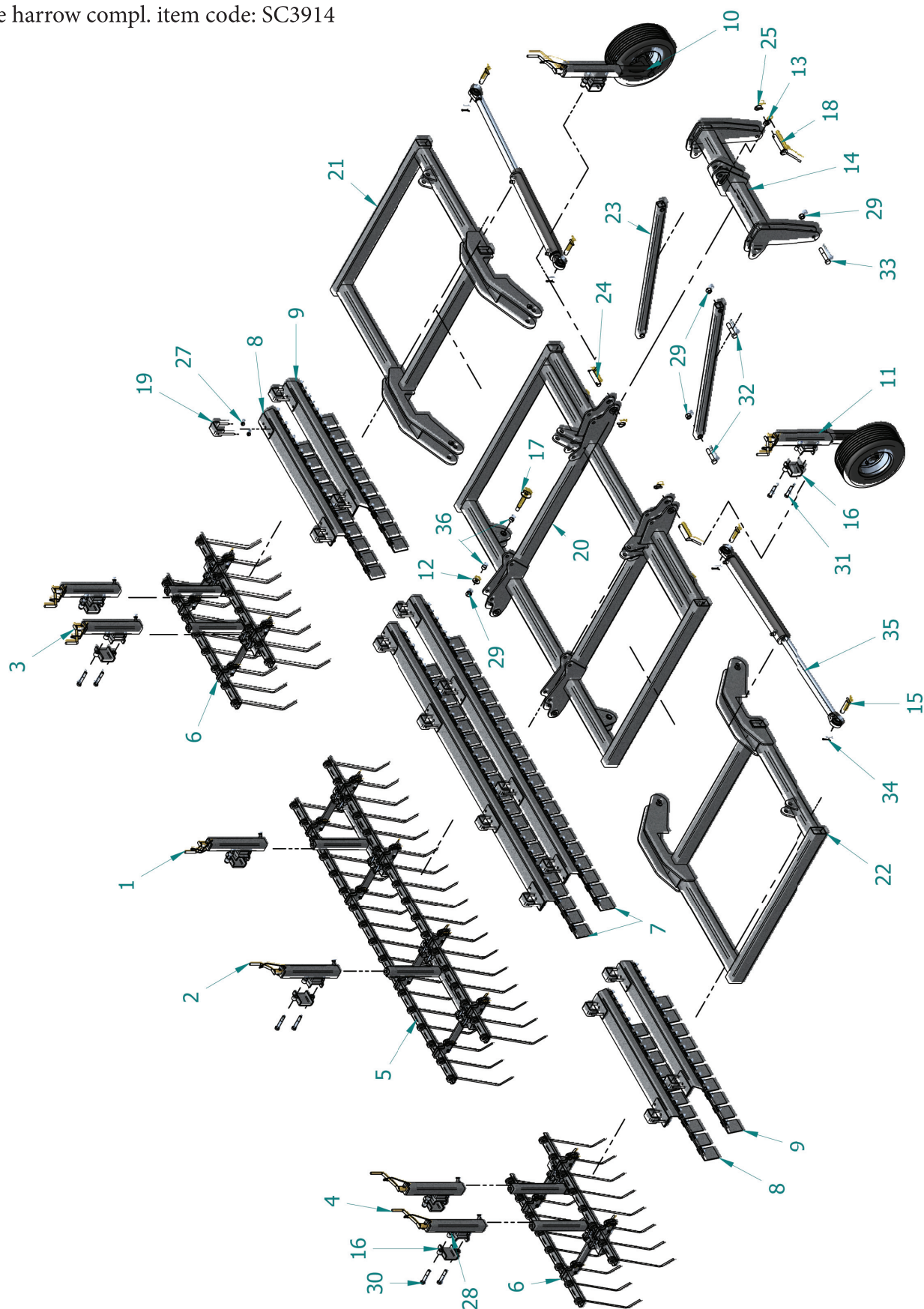
Complete item code: 0114020002



item code	item number	designation	quantity
0309020003	1	spindle for support wheel	1
0115010003	2	holder for trailin harrow and support wheel	1
0309020004	3	crank for trailin harrow and support wheel	1
1901010003	4	hexagonal screw M8x40	1
1902010002	5	hexagonal nut M8	1
1901010035	6	hexagonal screw M12x30	1
0309020008	7	crank fixation FR60	1

PASTURE HARROW 5M WORKING WIDTH

Pasture harrow compl. item code: SC3914

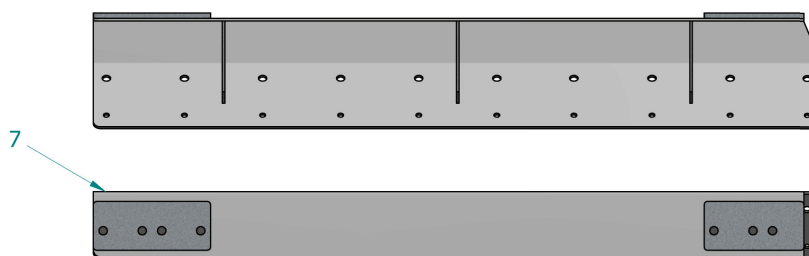
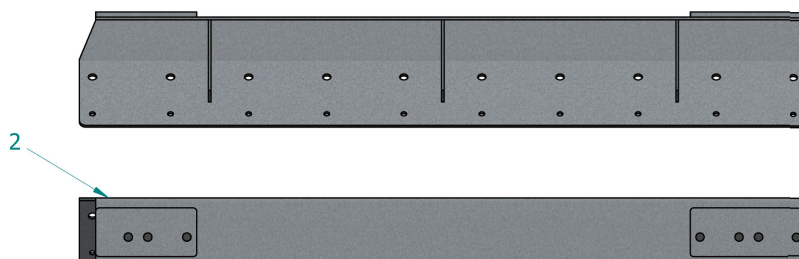
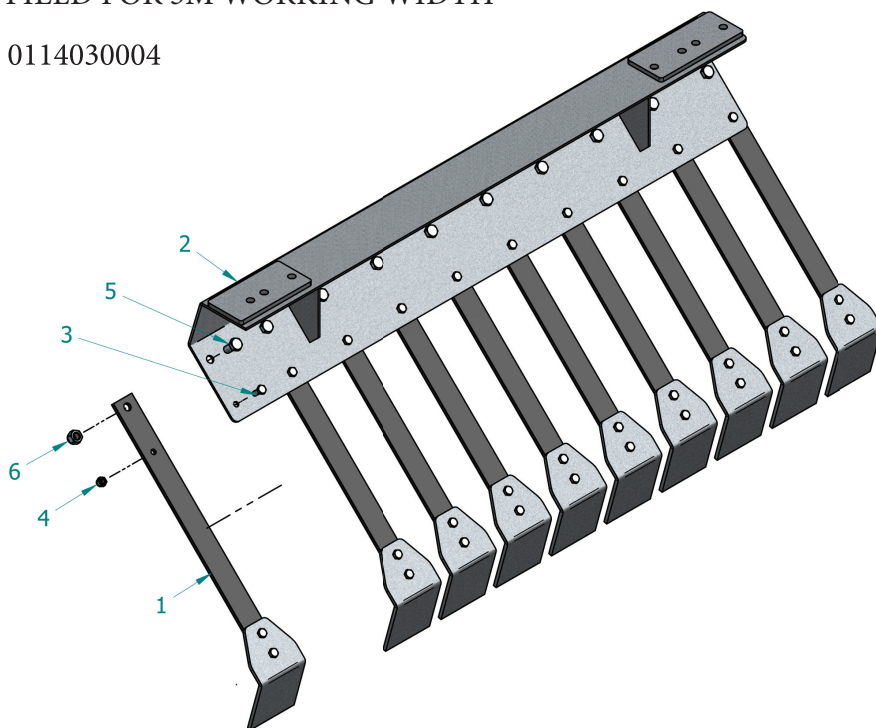


PASTURE HARROW 5M WORKING WIDTH

item code	item number	designation	quantity
0114020001	1	holder for trailin harrow 2,50m compl.	1
0114020001	2	holder for trailin harrow 2,50m compl.	1
0114020002	3	holder for trailin harrow compl.	2
0114020002	4	holder for trailin harrow compl.	2
0114010005	5	trailin harrow-150 f. 2,50m compl.	1
0114010005	6	trailin harrow-150 f. 5m compl.	2
0114030001	7	Leveling plate field-95 f. 2,50m	2
0114030004	8	Leveling plate field-95 f. 5m compl. left	2
0114030005	9	Leveling plate field-95 f. 5m compl. right	2
0115010001	10	support wheel left	1
0115010002	11	support wheel right	1
1908020001	12	disc A20	4
1908020004	13	disc A25 - 6mm	1
0101150002	14	3-point hitch	1
1903030003	15	connecting pins 25x95	4
1913020007	16	Blind plate FR80	8
1903040005	17	bolt DGB 25x104	4
1903020004	18	bolt OL 25x122,2	1
1913030001	19	terminal block FR60	16
0101150001	20	frame for middle part	1
0103280001	21	frame for side field 5m left	1
0102280001	22	frame for side field 5m right	1
0101150003	23	Brace f. pasture harrow	2
1903010002	24	Lower link bolt	2
1904010002	25	linch 10x45	3
1906060001	26*	grease nipple M8	2
1902010003	27	hexagonal nut M12	6
1902010008	28	hexagonal nut M16	16
1902010001	29	hexagonal nut M20	10
1901010046	30	hexagonal screw M16x100	12
1901010047	31	hexagonal screw M16x80	3
1901010048	32	hexagonal screw M20x100	4
1901010004	33	hexagonal screw M20x110	2
1904010004	34	linch ISO 1234 - 6,3x40	4
1912010008	35	cylinder 60x30x600	2
1906010004	36	cylindrical socket	3

LEVELING PLATE FIELD FOR 5M WORKING WIDTH

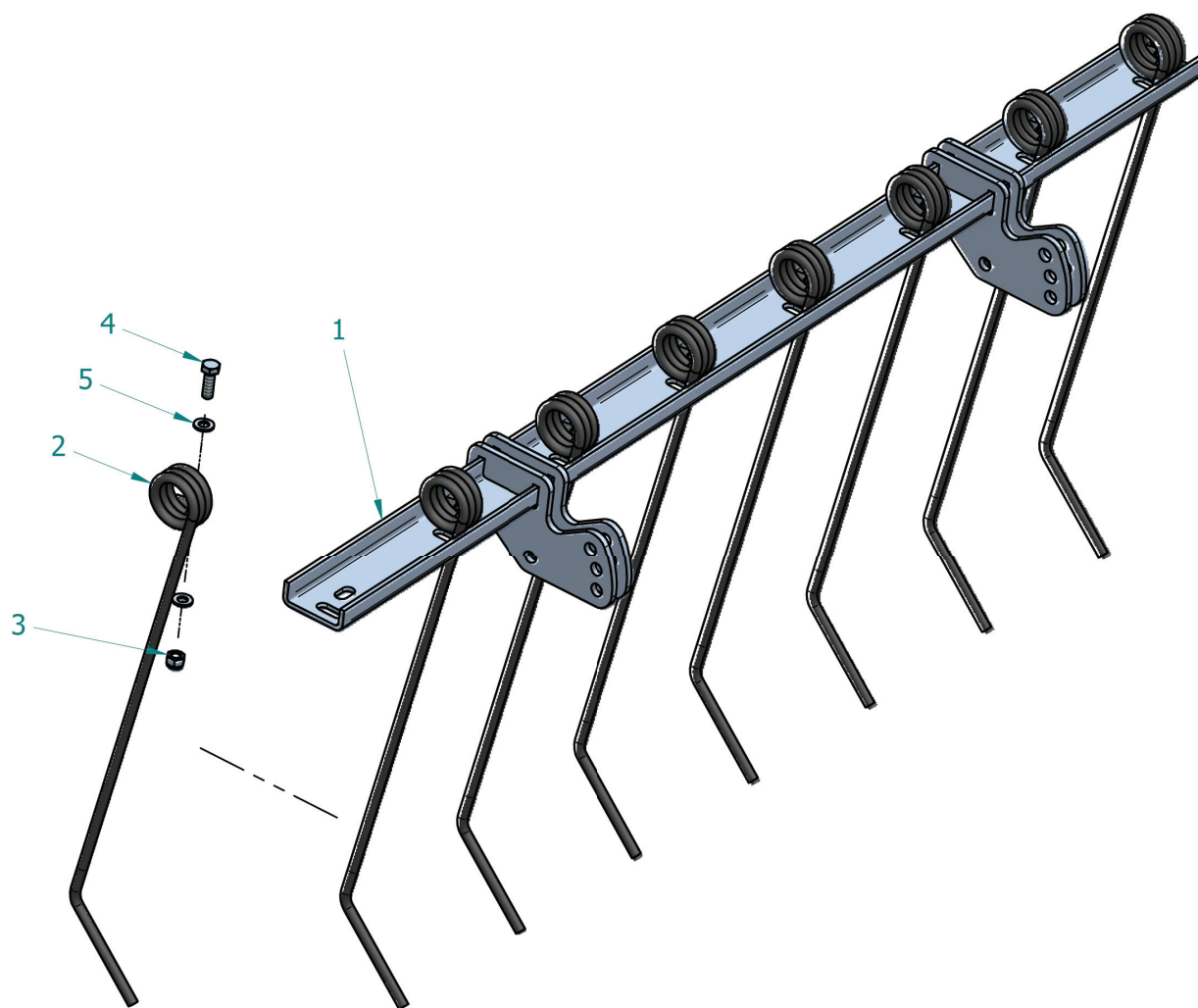
complete item code: 0114030004



item code	item number	designation	quantity
1909050001	1	leveling scapers 95 compl..	10
0114030006	2	holder for leveling plate - left	1
1901010049	3	hexagonal screw M8x20	10
1902010002	4	hexagonal nut M8	1
1901010005	5	hexagonal screw M12x25	10
1902010003	6	hexagonal nut M12	1
0114030007	7	holder for leveling plate - right	1

TINE CARRIER FOR COMB HARROW FOR 5M WORKING WIDTH

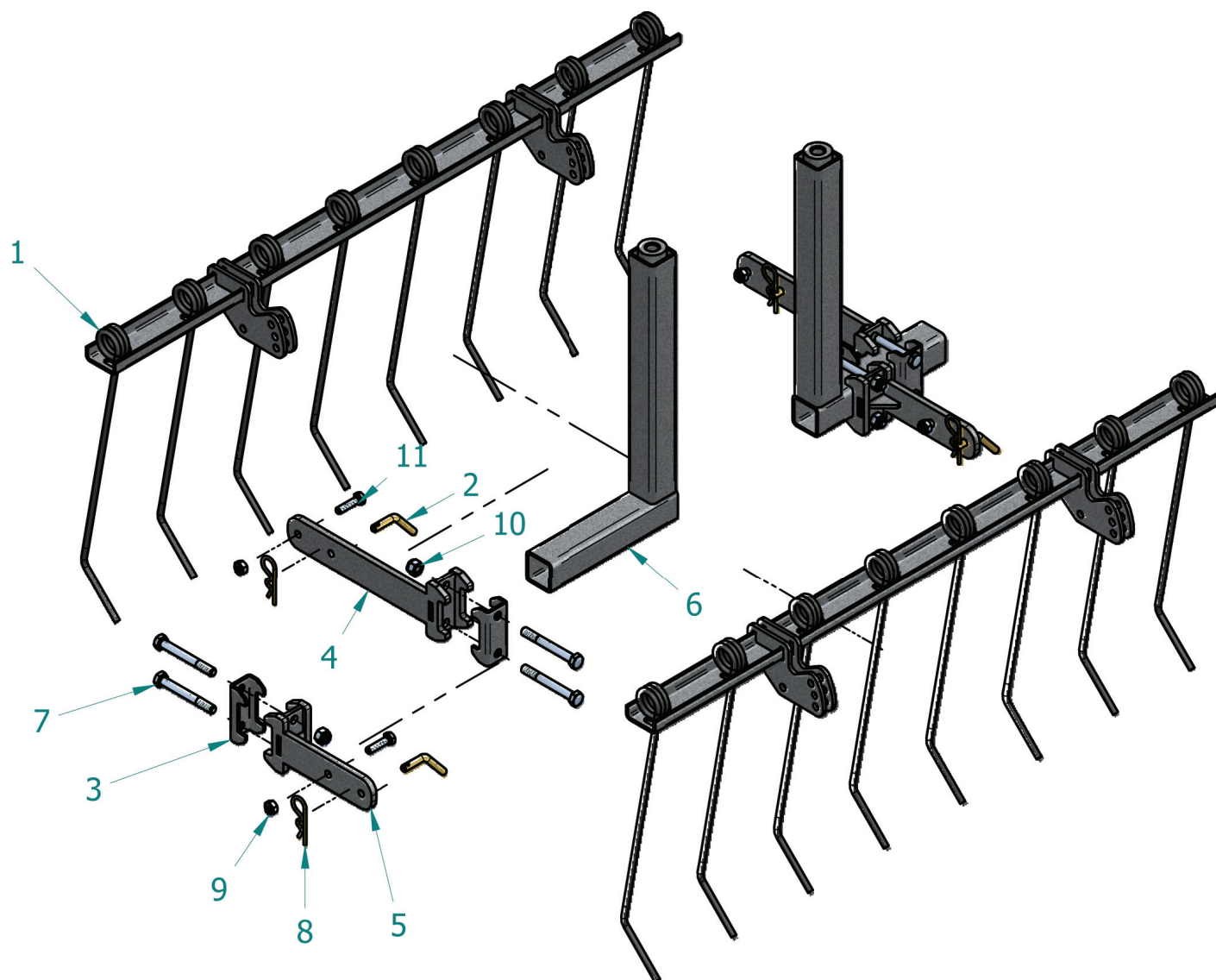
Complete item code: 0114010007



item code	item number	designation	quantity
0114010014	1	tine carrier-150 f. 5m	1
1909030007	2	tine 7mm	8
1902010002	3	hexagonal nut M8	1
1901010032	4	hexagonal screw M8x25	8
1908010004	5	disc DIN 125-A8,4	9

COMB HARROW FOR 5M WORKING WIDTH

Complete item code: 0114010005

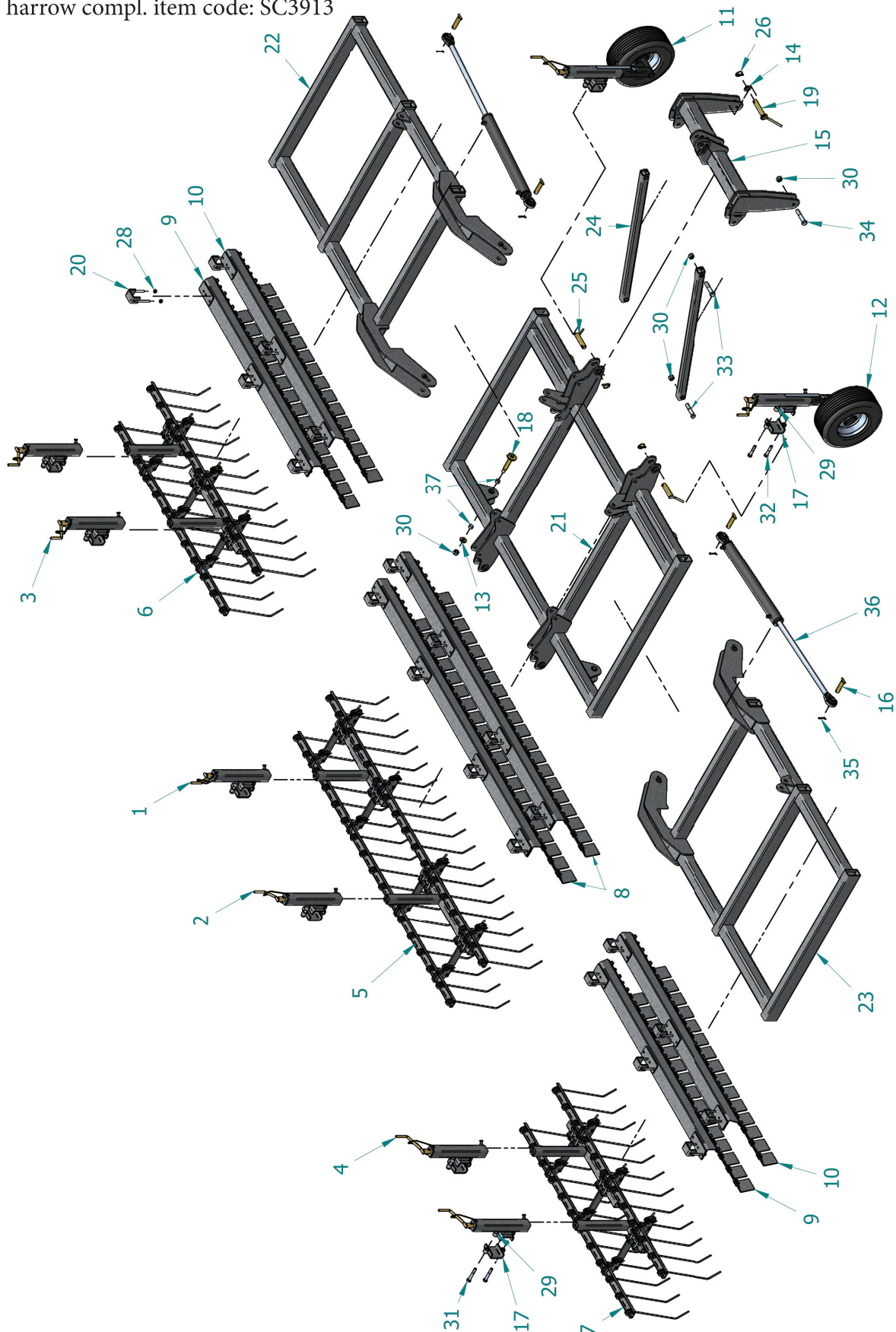


COMB HARROW FOR 5M WORKING WIDTH

item code	item number	designation	quantity
0114010007	1	tine carrier-150 compl f. 5m	2
1903030009	2	bolt AB 10x25	4
1913010004	3	clamping plate FR50	4
0114010012	4	holder for tine carrier - long	2
0114010011	5	holder for tine carrier - short	2
0114010009	6	insertion part f. trailin harrow short	2
1901010010	7	hexagonal screw M12x100	8
1904020002	8	Linch pin Ø=4mm	4
1902010005	9	hexagonal nut M10	4
1902010003	10	hexagonal nut M12	5
1901010031	11	hexagonal screw M10x40	4

PASTURE HARROW FOR 6M WORKING WIDTH

Pasture harrow compl. item code: SC3913

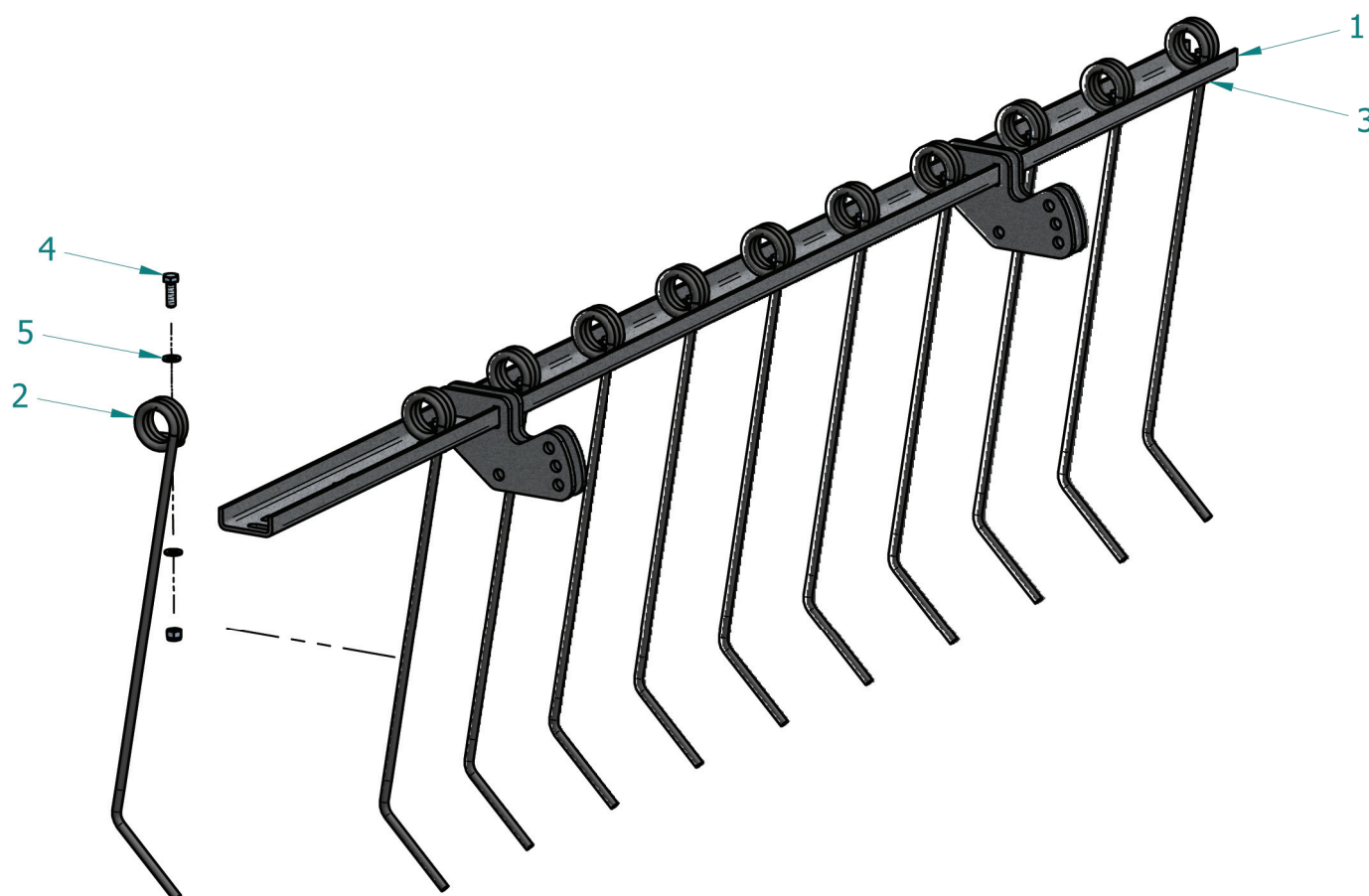


PASTURE HARROW 6M WORKING WIDTH

item code	item number	designation	quantity
0114020001	1	holder for trailin harrow 2,50m compl.	1
0114020001	2	holder for trailin harrow 2,50m compl.	1
0114020002	3	holder for trailin harrow compl.	2
0114020002	4	holder for trailin harrow compl.	2
0114010005	5	trailin harrow-150 f. 2,50m	1
0114010002	6	trailin harrow-150 f. 2,50m left	1
0114010001	7	trailin harrow-150 f. 2,50m right	1
0114030001	8	levelling plate field-95 f. 2,50m	2
0114030002	9	levelling plate field-95 f. 6m links	2
0114030003	10	levelling plate field-95 f. 6m right	2
0115010001	11	support wheel left	1
0115010002	12	support wheel right	1
1908020001	13	disc A20	4
1908020004	14	disc A25-6mm	1
0101150002	15	3-point hitch	1
1903030003	16	connecting pins	4
1913020007	17	Blind plate FR80	8
1903040005	18	bolt DGB 25x104	4
1903020004	19	bolt OL 25x122,5	1
1913030001	20	terminal block FR60	20
0101150001	21	frame for middle part 2,50m	1
0103290001	22	frame for side part 6m left	1
0102290001	23	frame for side part 6m right	1
0101150003	24	strut for pasture harrow	2
1903010002	25	Lower link bolt	2
1904010002	26	linch 10x45	3
1906060001	27	greasing	2
1902010003	28	hexagonal nut M12	6
1902010008	29	hexagonal nut M16	16
1902010001	30	hexagonal nut M20	10
1901010046	31	hexagonal screw M16x100	11
1901010047	32	hexagonal screw M16x80	3
1901010048	33	hexagonal screw M20x100	4
1901010004	34	hexagonal screw M20x110	2
1904010004	35	cotter ISO 1234-6,3x40	4
1912010008	36	cylinder 60x30x600	2
1906010004	37	cylindrical socket	3

TINE CARRIER FOR COMB HARROW 6M WORKING WIDTH

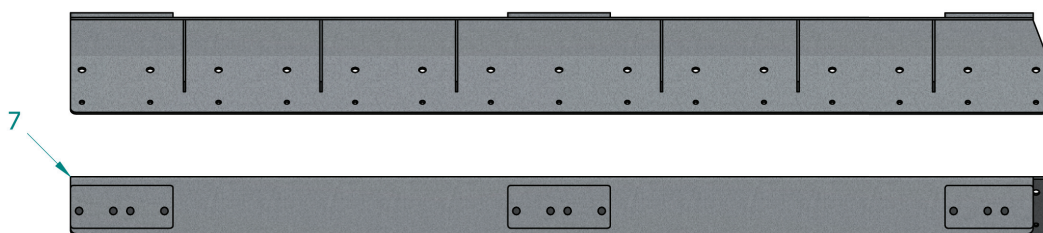
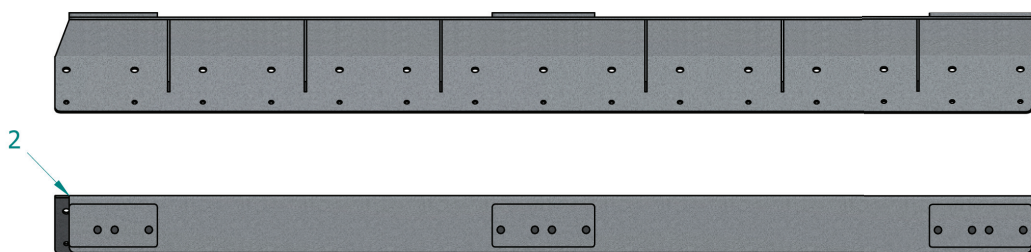
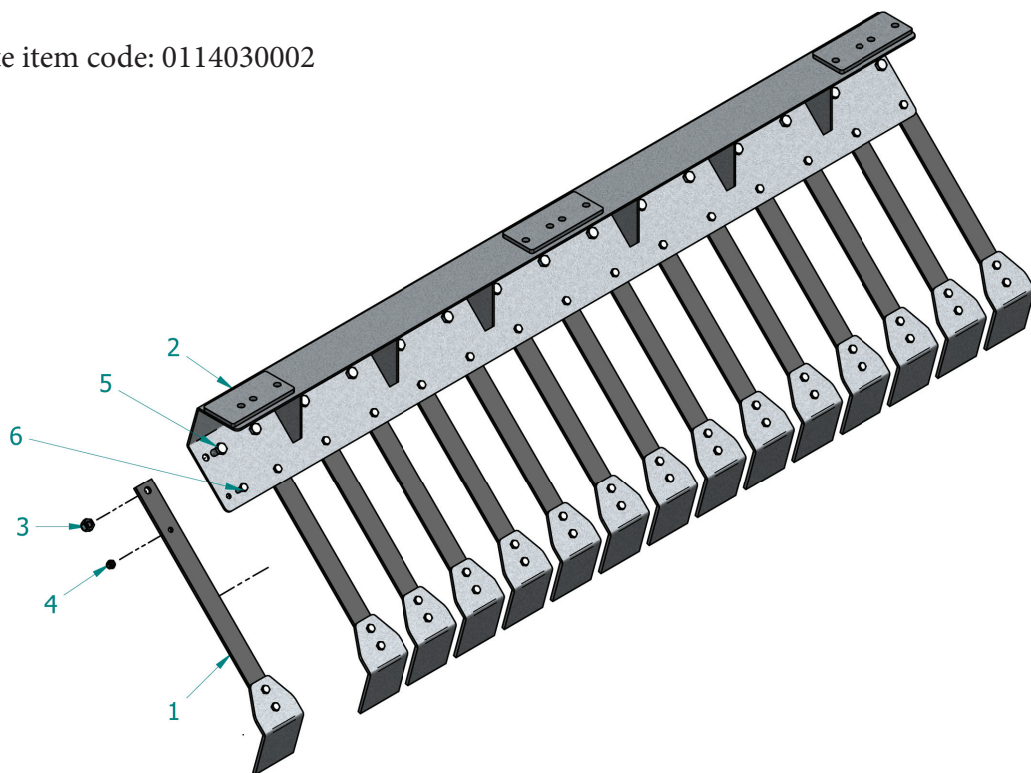
Complete item code: 0114010006



item code	item number	designation	quantity
0114010013	1	tine carrier-150 f. 6m	1
1909030007	2	tine 7mm	12
1902010002	3	hexagonal nut M8	11
1901010032	4	hexagonal screw M8x25	12
1908010004	5	disc DIN 125-A8,4	13

LEVELING SCAPERS FOR 6M PASTURE HARROW - LEFT SIDE

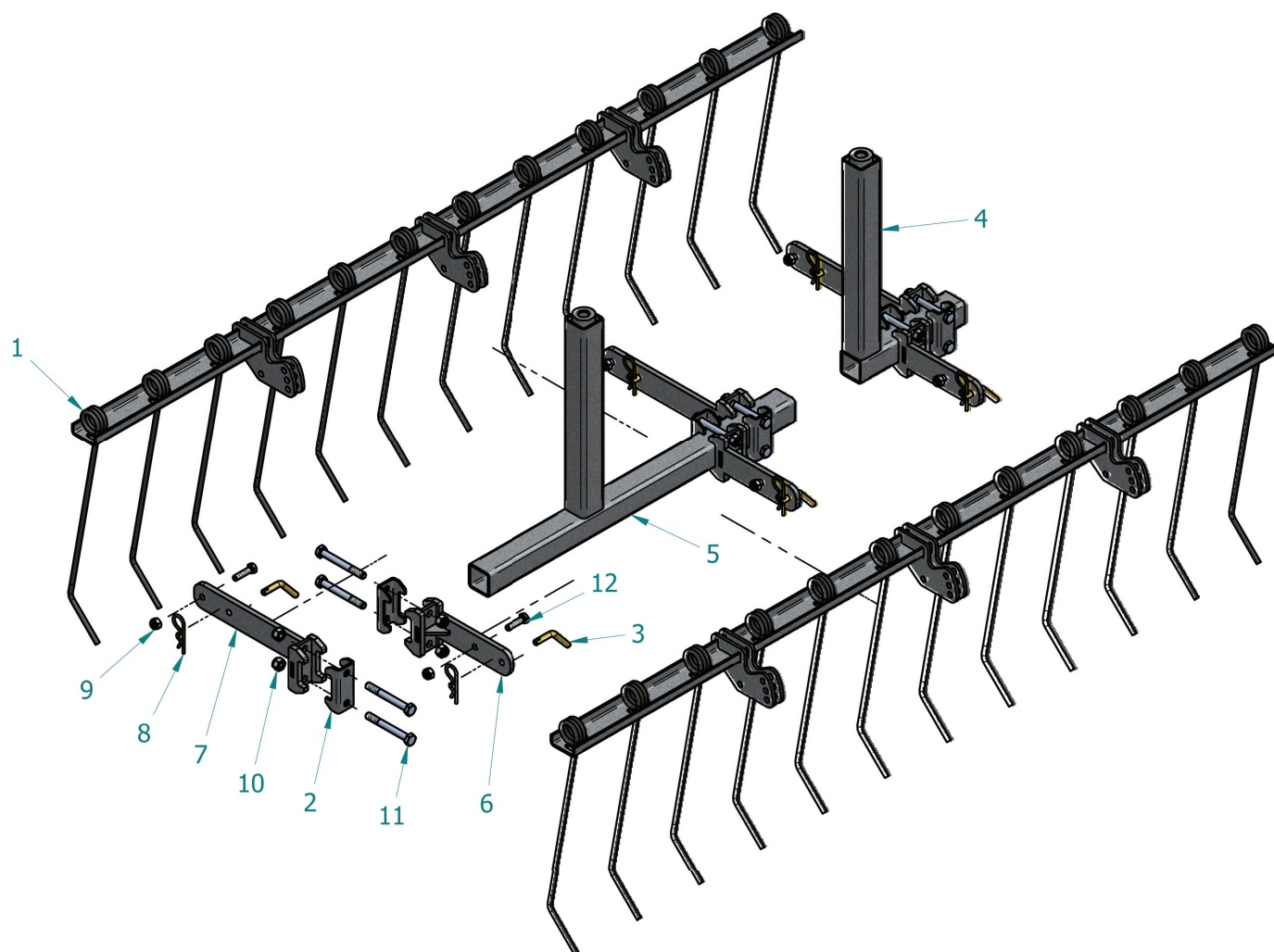
complete item code: 0114030002



item code	item number	designation	quantity
1909050001	1	leveling scaper-95 kompl.	15
0114030008	2	holder for leveling plate - left	1
1902010003	3	hexagonal nut M12	15
1902010002	4	hexagonal nut M8	15
1901010005	5	hexagonal screw M12x25	15
1901010049	6	hexagonal screw M8x20	15
0114030009	7	holder for leveling plate - right	1

COMB HARROW FOR 6M WORKING WIDTH

Complete item code: 0114010002



item code	item number	designation	quantity
0114010006	1	tine carrier-150 f. 6m	2
1913010004	2	clamping plate FR50	6
1903030009	3	bolt AB 10x25	6
0114010009	4	insertion part f. trailin harrow short	1
0114010010	5	insertion part f. trailin harrow long	1
0114010011	6	holder for tine carrier - short	3
0114010012	7	holder for tine carrier - long	3
1904020002	8	Linch pin Ø=4mm	6
1902010005	9	hexagonal nut M10	6
1902010003	10	hexagonal nut M12	8
1901010010	11	hexagonal screw M12x100	10
1901010031	12	hexagonal screw M10x40	6