

MAGNA

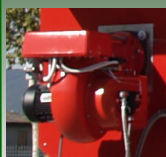
120ECO DIESEL FIRED DRYERS

The New Magna 120 Eco is a base spec Dryer designed to give an affordable 12 ton holding capacity Dryer whilst still offering the clean burn, fuel saving technology like the rest of the magna range. Its Duax heat core retains and builds up heat ensuring a more even temperature and a clean burn. The 120's fixed screens allow even quicker setup and make it a easily mobile Dryer.

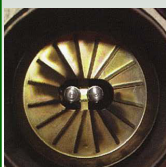
- 12 ton Holding capacity – 5 ton per hour drying capacity
- Duax heat core – clean, efficient drying.
- Fixed screens – simple and quick to set up.
- Low level Burner – easy access for servicing and setting
- Stainless Steel Screens – longevity



•Stainless steel perforated screens, 1.5mm on the outside and 2.5mm on the inner plenum providing maximum airflow without compromise (particularly important when drying rape). •Fixed screens and discharge head for fast simple set up from transport to working position. •The pressure at which the centrifugal fans work ensures that the air produced is driven through even the densest and wettest crops. •A grain sampler comes as standard. •Heavy duty bevel gearbox drives the 368mm (14½") main auger. The auger and gearbox assembly is mounted on a 15mm base plate which gives strength and durability to the bottom bin



A highly efficient modulating diesel burner is easily accessible for servicing, simply remove the securing nut and swing the burner out for ease of maintenance



In the servicing position the high and low flame jets are easily accessible. The air mixture can be altered when in working position.



Controls are protected with a weather and dust proof case with a glass viewing screen



All Magna dryers are fitted with a DUAX Heat Core Burner. This uses heat retaining bricks similar to those in a storage heater, to heat the air as well as the burner. Inside the burner chamber is a steel barrel which is lined with the heat bricks. As the heat bricks build up temperature, the whole burner core heats air as it is drawn past into the fan

SPECIFICATIONS FOR MODEL 120ECO DRYER

Model	120ECO PTO
Drying capacity (21-16%)*	5 t/hr
Holding capacity	12t - (15.2m³)
Height - working position	4.5m (14'9")
Height - transport position	4.5m (14'9")
Width	2.55m (8'4")
Length - working position	8.75m (28'8")
Length - transport position	6.2m (24'4")
Weight - empty	3250 kgs
Grain wall thickness	500mm (19¾")
Vertical auger size	368mm (14½")
Loading auger size	200mm (8")
Burner size - Diesel / Kerosene	2,420,000 BTU/hr (600,000 Kcal)
Fan type and size	Centrifugal ø 710mm (28")
Fan rating and Outlet static pressure	35,000 m³/hr @ 7 Mbar 20,600 CFM @ 2.75"
PTO speed / Power required	470 rpm, 37kW (50hp)
Recirculating time	90 t/hr (10 min)
Loading rate	50 t/hr (12 min)
Unloading rate	80 t/hr (9 min)
Fuel tank capacity	460 litres

* Throughput per hour assumed 5% moisture reduction from 21% to 16%. Includes loading, heating, cooling and unloading time.



PROFIT FROM OUR KNOWLEDGE

OPICO LIMITED

Cherry Holt Road Bourne
Lincolnshire PE10 9LA

Tel: 01778 421111

Fax: 01778 425080

email: ask@opico.co.uk

www.opico.co.uk

MAGNA

1200QF & 2000QF DIESEL FIRED DRYERS

HIGH CAPACITY, FASTER LOADING, GREATER THROUGHPUT, FASTER DRYING...

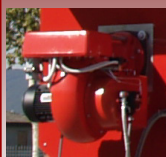
The OPICO range of Magna dryers are specifically designed with UK farmers' crops and needs in mind. The 1200QF provides efficient, clean, diesel fired drying and ease of transport and the 2000QF gives higher throughput than previously achievable with a mobile batch dryer.

Both models use a large cross-flow centrifugal fan which is quiet and powerful. The Magna range has all the benefits of true re-circulation, better sample, improved hectolitre weight and ease of management

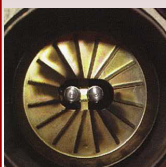
The Eco-Flo diesel burner gives a semi-indirect burn to ensure it is the most environmentally friendly batch dryer yet. At the same time the Magna's multi-tiled "heat-exchanger" retains and builds up heat to give super efficient drying



- Stainless steel perforated screens, 1.5mm on the outside and 2.5mm on the inner plenum providing maximum airflow without compromise (particularly important when drying rape).
- Wind up screens and a winch-over discharge head for fast and simple set up from transport to working position.
- The pressure at which the centrifugal fans work ensures that the air produced is driven through even the densest and wettest crops.
- A grain sampler comes as standard.
- Heavy duty bevel gearbox drives the 368mm (14½") main auger. The auger and gearbox assembly is mounted on a 15mm base plate which gives strength and durability to the bottom bin



A highly efficient modulating diesel burner is easily accessible for servicing, simply remove the securing nut and swing the burner out for ease of maintenance



In the servicing position the high and low flame jets are easily accessible. The air mixture can be altered when in working position.



Controls are protected with a weather and dust proof case with a glass viewing screen



All Magna dryers are fitted with a DUAX Heat Core Burner. This uses heat retaining bricks similar to those in a storage heater, to heat the air as well as the burner. Inside the burner chamber is a steel barrel which is lined with the heat bricks. As the heat bricks build up temperature, the whole burner core heats air as it is drawn past into the fan

SPECIFICATIONS FOR MODEL 1200QF & 2000QF DRYERS

Model	1200QF PTO	2000QF PTO
Drying capacity (21-16%)*	6 t/hr	10 t/hr
Holding capacity	12t - 16m³	20t - 27m³
Height - working position / Sky-Vac	5.7m (18'8") / 6.2m (20'4")	6.2m (20'4") / 6.8m (22'4")
Height - transport position / Sky-Vac	4.2m (13'9") / 4.55m (14' 11")	4.35m (14'3") / 4.81m (15' 10")
Width	2.55m (8'4")	3.2m (10'6")
Length - working position	8.75m (28'8")	9.54m (31'14")
Length - transport position	6.2m (20')	7.4m (23'7")
Weight - empty	3400 kgs	4400 kgs
Grain wall thickness	500mm (19¾")	500mm (19¾")
Vertical auger size	368mm (14½")	368mm (14½")
Loading auger size	200mm (8")	250mm (10")
Unloading auger size (Optional)	250mm (10")	300mm (11¾")
Burner size - Diesel / Kerosene	2,420,000 BTU/hr (600,000 Kcal)	3,980,000 BTU/hr (1,003,000 Kcal)
Fan type and size	Centrifugal ø 710mm (28")	Centrifugal ø 800mm (31½")
Fan rating and Outlet static pressure	40,000 m³/hr @ 9.3Mbar 23,540 CFM @ 3.75"	55,000 m³/hr @ 10Mbar 32,375 CFM @ 4"
PTO speed / Power required	470 rpm, 40kW (54hp)	470rpm, 56 kW (75hp)
Recirculating time	90 t/hr (8 min)	120t/hr (10 min)
Loading rate	50 t/hr (12 min)	100 t/hr (12 min)
Unloading rate	80 t/hr (9 min)	100 t/hr (12 min)
Fuel tank capacity	460 litres	670 litres

Electric drive requires 3-phase, 63 amp (1200) or 100 amp (2000) power supply. Supply line to include 3-phases, earth and neutral on a dedicated circuit via residual current device and should be fitted by a qualified electrician.

* Throughput per hour assumed 5% moisture reduction from 21% to 16%. Includes loading, heating, cooling and unloading time.



PROFIT FROM OUR KNOWLEDGE

OPICO LIMITED

Cherry Holt Road Bourne
Lincolnshire PE10 9LA

Tel: 01778 421111

Fax: 01778 425080

email: ask@opico.co.uk

www.opico.co.uk

OPICO's policy is one of continuous improvement and the right to change prices, specifications or equipment at any time without prior notice is reserved

MAGNA 1200QF & 2000QF AUTO DIESEL FIRED DRYERS

HIGH CAPACITY, FASTER LOADING, GREATER THROUGHPUT, FASTER DRYING...

The OPICO range of Magna dryers are specifically designed with UK farmers' crops and needs in mind.

Providing efficient, clean, diesel fired drying these fully automated models can be set up in conjunction with a wet holding bin and will load, dry, cool and unload automatically giving unattended drying hour after hour, 7 days a week.

In today's climate automated drying with minimal labour requirement allows far better usage of any farms resources.

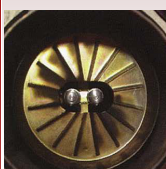
Working continuously the 1200Qf and 2000QF Automatics are capable of drying over 840 and 1500 tons a week respectively.



- Stainless steel perforated screens, 1.5mm on the outside and 2.5mm on the inner plenum providing maximum airflow without compromise (particularly important when drying rape).
- Fully automated computer controls with 65m compatability.
- The pressure at which the centrifugal fans work ensures that the air produced is driven through even the densest and wettest crops.
- A grain sampler comes as standard.
- Some bespoke alterations can be made to the dryer if required-Ask for details.



A highly efficient modulating diesel burner is easily accessible for servicing, simply remove the securing nut and swing the burner out for ease of maintenance



In the servicing position the high and low flame jets are easily accessible. The air mixture can be altered when in working position.



All Magna dryers are fitted with a DUAX Heat Core Burner. This uses heat retaining bricks similar to those in a storage heater, to heat the air as well as the burner. Inside the burner chamber is a steel barrel which is lined with the heat bricks. As the heat bricks build up temperature, the whole burner core heats air as it is drawn past into the fan

Electric drive requires 3-phase, 63 amp (1200) or 100 amp (2000) power supply. Supply line to include 3-phases, earth and neutral on a dedicated circuit via residual current device and should be fitted by a qualified electrician.

Electric motors 1200QF/2000QF:
 18.5kw/22.5kw - centrifugal fan
 15kw/15kw - central auger
 4kw/7.5kw - loading auger
 2.2kw/2.2kw - discharge auger
 1.5kw/1.5kw - agitator
 0.75kw/1.1kw - burner

SPECIFICATIONS FOR AUTO 1200QF & 2000QF DRYERS

Model	1200QF Auto/Electric	2000QF Auto/Electric
Drying capacity (21-16%)*	6 t/hr	10 t/hr
Holding capacity	12t - 16m³	20t - 27m³
Height - working position / Sky-Vac	5.7m (18'8") / 6.2m (20'4")	6.2m (20'4") / 6.8m (22'4")
Height - transport position / Sky-Vac	4.2m (13'9") / 4.55m (14' 11")	4.35m (14'3") / 4.81m (15' 10")
Width	2.55m (8'4")	3.2m(10'6")
Length - working position	8.75m (28'8")	9.54m (31'4")
Length - transport position	6.2m (20')	7.4m (23'7")
Weight - empty	4200 kgs	5200 kgs
Grain wall thickness	500mm (19¾")	500mm (19¾")
Vertical auger size	368mm (14½")	368mm (14½")
Loading auger size	200mm (8")	250mm (10")
Unloading auger size	250mm (10")	300mm (11¾")
Burner size - Diesel / Kerosene	2,420,000 BTU/hr (600,000 Kcal)	3,980,000 BTU/hr (1,003,000 Kcal)
Fan type and size	Centrifugal ø 710mm (28")	Centrifugal ø 800mm (31½")
Fan rating and	40,000 m³/hr @ 9.3Mbar	55,000 m³/hr @ 10Mbar
Outlet static pressure	23,540 CFM @ 3.75"	32,375 CFM @ 4"
Recirculating time	90 t/hr (8 min)	120t/hr (10 min)
Loading rate	50 t/hr (12 min)	100 t/hr (12 min)
Unloading rate	80 t/hr (9 min)	100 t/hr (12 min)
Electric power used	30kW (60Amp) - 6 Motors	36kW (75Amp) - 6 Motors
Fuel tank capacity	460 litres	670 litres

* Throughput per hour assumed 5% moisture reduction from 21% to 16%. Includes loading, heating, cooling and unloading time.



PROFIT FROM OUR KNOWLEDGE

OPICO LIMITED

Cherry Holt Road Bourne
Lincolnshire PE10 9LA

Tel: 01778 421111

Fax: 01778 425080

email: ask@opico.co.uk

www.opico.co.uk

MAGNA 2910QF - PTO, Electric and Auto DIESEL FIRED DRYER

HIGH CAPACITY, FASTER LOADING, GREATER THROUGHPUT, FASTER DRYING...

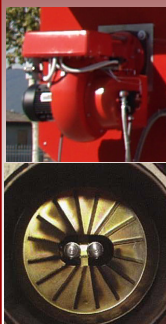
The OPICO range of Magna dryers are specifically designed with UK farmers' crops and needs in mind. The Magna dryers provides efficient, clean, diesel fired drying and ease of transport and the 2910QF gives higher throughput than previously achievable with a mobile batch dryer.

All Magna models use a large cross-flow centrifugal fan which is quiet and powerful. The Magna range has all the benefits of true re-circulation, better sample, improved hectolitre weight and ease of management

The Eco-Flo diesel burner gives a semi-indirect burn to ensure it is the most environmentally friendly batch dryer yet. At the same time the Magna's multi-tiled "heat-exchanger" retains and builds up heat to give super efficient drying.



- Stainless steel perforated screens, 1.5mm on the outside and 2.5mm on the inner plenum providing maximum airflow without compromise (particularly important when drying rape).
- Wind up screens and a winch-over discharge head for fast and simple set up from transport to working position.
- The pressure at which the centrifugal fans work ensures that the air produced is driven through even the densest and wettest crops.
- A grain sampler comes as standard.
- Heavy duty bevel gearbox drives the 450mm (17¾") main auger. The auger and gearbox assembly is mounted on a 15mm base plate which gives strength and durability to the bottom bin



A highly efficient modulating diesel burner is easily accessible for servicing, simply remove the securing nut and swing the burner out for ease of maintenance

In the servicing position the high and low flame jets are easily accessible. The air mixture can be altered when in working position.



Controls are protected with a weather and dust proof case with a glass viewing screen



All Magna dryers are fitted with a DUAX Heat Core Burner. This uses heat retaining bricks similar to those in a storage heater, to heat the air as well as the burner. Inside the burner chamber is a steel barrel which is lined with the heat bricks. As the heat bricks build up temperature, the whole burner core heats air as it is drawn past into the fan

SPECIFICATIONS

Model	2910QF Auto/Electric	2910QF PTO
Drying capacity (21-16%)*	14 t/hr	14 t/hr
Holding capacity	29t - 37m³	29t - 37m³
Height - working position / Sky-Vac	6.1m (20') / 7.14m (23'6")	7m (23') / 7.6m (25')
Height - transport position / Sky-Vac	4.75m (15'7") / 5.1m (16' 9")	5.09m (16'7") / 5.1m (16' 9")
Width	4m (13' 2")	4m (13' 2")
Length - working position	10.16m (33'4")	10.16m (33'4")
Length - transport position	7.8m (25'7")	8.05m (26'5")
Weight - empty	6950 kgs	6340 kgs
Grain wall thickness	510mm (18¾")	510mm (18¾")
Vertical auger size	450mm (17¾")	450mm (17¾")
Loading auger size	300mm (11¾")	300mm (11¾")
Unloading auger size (**Optional)	300mm (11¾")	**300mm (11¾")
Burner size - Diesel / Kerosene	5,550,000 BTU/hr (1,400,000 Kcal)	5,550,000 BTU/hr (1,400,000 Kcal)
Fan type and size	Centrifugal ø 900mm (35¼")	Centrifugal ø 900mm (35¼")
Fan rating and Outlet static pressure	75,000 m³/hr @ 10Mbar 44,137 CFM @ 4"	75,000 m³/hr @ 10Mbar 44,137 CFM @ 4"
PTO speed / Power required	N/A	470rpm, 100hp (75kW)
Recirculating time	145 t/hr (12 min)	145 t/hr (12 min)
Loading rate	120 t/hr (15 min)	120 t/hr (15 min)
Unloading rate	130 t/hr (13 min)	130 t/hr (13 min)
Electric power used	58kW (110Amp) - 6 Motors	N/A
Fuel tank capacity	1000 litres	1000 litres

Electric drive requires 3-phase, 140 amp supply. Supply line to include 3-phases, earth and neutral on a dedicated circuit via residual current device and should be fitted by a qualified electrician.

* Throughput per hour assumed 5% moisture reduction from 21% to 16%. Includes loading, heating, cooling and unloading time.



PROFIT FROM OUR KNOWLEDGE

OPICO LIMITED

Cherry Holt Road Bourne
Lincolnshire PE10 9LA

Tel: 01778 421111

Fax: 01778 425080

email: ask@opico.co.uk

www.opico.co.uk

OPICO's policy is one of continuous improvement and the right to change prices, specifications or equipment at any time without prior notice is reserved

MAGNA 3810QF - PTO, Electric and Auto DIESEL FIRED DRYER

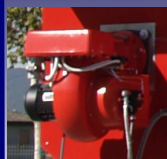
The New 3810 uses the base frame and drives from the 2910 launched in 2009 but incorporates fixed screens and a bolt on Plenum extension which are built on farm. Whilst this effectively makes the Dryer fixed it allows a significant increase in the size of the Drying Zone which means the Drying capacity increases in proportion with its holding capacity unlike large winch up machines.

The Fan, Burner and Auger capacities have all been increased in line with the holding capacity to achieve the highest throughput possible whilst still retaining all the other features common to the Magna range.

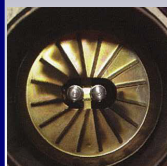
When set up in conjunction with a Wet Holding facility the Automated versions are amongst the most efficient and highest throughput batch dryers on the market.



- Duax heat Core – clean, efficient drying
- Low Level Burner – easy access for servicing and setting
- Bolt on Plenum top – large Drying Zone
- 45cm, 160tph main Auger – fast recirculation and unloading for quicker drying
- Fixed stainless steel screens – longevity



A highly efficient modulating diesel burner is easily accessible for servicing, simply remove the securing nuts and slide the burner out for ease of maintenance



In the servicing position the high and low flame jets are easily accessible. The air mixture can be altered when in working position.



Controls are protected with a weather and dust proof case with a glass viewing screen



All Magna dryers are fitted with a DUAX Heat Core Burner. This uses heat retaining bricks similar to those in a storage heater, to heat the air as well as the burner. Inside the burner chamber is a steel barrel which is lined with the heat bricks. As the heat bricks build up temperature, the whole burner core heats air as it is drawn past into the fan

SPECIFICATIONS

Model	3810QF Auto/Electric	3810QF PTO
Drying capacity (21-16%)*	16 t/hr	16 t/hr
Holding capacity	38t - 49m³	38t - 49m³
Height - working position / Sky-Vac	7.8m (25'7") / 7.94m (26'1")	7.8m (25'7") / 7.94m (26'1")
Height - transport position	4.3m (14'1")	4.3m (14'1")
Width	4m (13'2")	4m (13'2")
Length - working position	10.5m (26'4")	10.5m (26'4")
Length - transport position	8m (13'2")	8m (13'2")
Weight - empty	8200 kgs	7700 kgs
Grain wall thickness	500mm (19¾")	500mm (19¾")
Vertical auger size	450mm (17¾")	450mm (17¾")
Loading auger size	300mm (11¾")	300mm (11¾")
Unloading auger size	300mm (11¾")	300mm (11¾")
Burner size - Diesel / Kerosene	5,555,000 BTU/hr (1,400,000 Kcal)	5,555,000 BTU/hr (1,400,000 Kcal)
Fan type and size	Centrifugal ø 1120mm (44")	Centrifugal ø 1120mm (44")
Fan rating and Outlet static pressure	100,000 m³/hr @ 10Mbar 58,860 CFM @ 4"	100,000 m³/hr @ 10Mbar 58,860 CFM @ 4"
PTO speed / Power required	N/A	470rpm, 150hp (110kW)
Recirculating time	145 t/hr (15 min)	145 t/hr (15 min)
Loading rate	100 t/hr (24 min)	100 t/hr (24 min)
Unloading rate	130 t/hr (17 min)	130 t/hr (17 min)
Electric power used	70Kw (130Amp) - 6 Motors	N/A
Fuel tank capacity	1000 litres	1000 litres

Electric drive requires 3-phase, 160 amp supply. Supply line to include 3-phases, earth and neutral on a dedicated circuit via residual current device and should be fitted by a qualified electrician.

*Throughput per hour assumed 5% moisture reduction from 21% to 16%. Includes loading, heating, cooling and unloading time.



PROFIT FROM OUR KNOWLEDGE

OPICO LIMITED

Cherry Holt Road Bourne
Lincolnshire PE10 9LA

Tel: 01778 421111

Fax: 01778 425080

email: ask@opico.co.uk

www.opico.co.uk

MAGNA 4810QF - PTO, Electric and Auto DIESEL FIRED DRYER

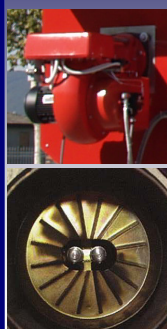
The New 4810 is the 3810's larger brother, it uses the same base but with an even larger Holding capacity and Plenum extension. Like the 3810 this means that the 4810 is effectively a fixed Dryer but allows a significant increase in the size of the Drying Zone which means the Drying capacity increases in proportion with its holding capacity unlike large winch up machines.

The Fan, Burner and Auger capacities have all been increased in line with the holding capacity to achieve the highest throughput possible whilst still retaining all the other features common to the Magna range.

When set up in conjunction with a Wet Holding facility the Automated versions are amongst the most efficient and highest throughput batch dryers on the market.



- Stainless steel perforated screens, •Duax heat Core – clean, efficient drying •Low Level Burner – easy access for servicing and setting •Bolt on Plenum top – large Drying Zone •45cm, 160tph main Auger – fast recirculation and unloading for quicker drying
- Fixed stainless steel screens – longevity



A highly efficient modulating diesel burner is easily accessible for servicing, simply remove the securing nuts and slide the burner out for ease of maintenance

In the servicing position the high and low flame jets are easily accessible. The air mixture can be altered when in working position.



Controls are protected with a weather and dust proof case with a glass viewing screen



All Magna dryers are fitted with a DUAX Heat Core Burner. This uses heat retaining bricks similar to those in a storage heater, to heat the air as well as the burner. Inside the burner chamber is a steel barrel which is lined with the heat bricks. As the heat bricks build up temperature, the whole burner core heats air as it is drawn past into the fan

SPECIFICATIONS

Model	4810QF Auto/Electric	4810QF PTO
Drying capacity (21-16%)*	20 t/hr	20 t/hr
Holding capacity	48t - 63m³	48t - 63m³
Height - working position / Sky-Vac	9.10m (29'10") / 9.24m (30'4")	9.10m (29'10") / 9.24m (30'4")
Height - transport position	4.3m (14'1")	4.3m (14'1")
Width	4m (13'2")	4m (13'2")
Length - working position	10.5m (34'5")	10.5m (34'5")
Length - transport position	8m (26'4")	8m (26'4")
Weight - empty	8600 Kgs	8050 Kgs
Grain wall thickness	500mm (19¾")	500mm (19¾")
Vertical auger size	450mm (17¾")	450mm (17¾")
Loading auger size	300mm (11¾")	300mm (11¾")
Unloading auger size	300mm (11¾")	300mm (11¾")
Burner size - Diesel / Kerosene	5,555,000 BTU/hr (1,400,000 Kcal)	5,555,000 BTU/hr (1,400,000 Kcal)
Fan type and size	Centrifugal ø 1120mm (44")	Centrifugal ø 1120mm (44")
Fan rating and Outlet static pressure	100,000 m³/hr @ 10Mbar 58,860 CFM @ 4"	100,000 m³/hr @ 10Mbar 58,860 CFM @ 4"
PTO speed / Power required	N/A	470rpm, 160hp (120kW)
Recirculating time	145 t/hr (20 min)	145 t/hr (20 min)
Loading rate	100 t/hr (30 min)	100 t/hr (30 min)
Unloading rate	130 t/hr (22 min)	130 t/hr (22 min)
Electric power used	80Kw (140Amp) - 6 Motors	N/A
Fuel tank capacity	1000 litres	1000 litres

Electric drive requires 3-phase, 180 amp supply. Supply line to include 3-phases, earth and neutral on a dedicated circuit via residual current device and should be fitted by a qualified electrician.

*Throughput per hour assumed 5% moisture reduction from 21% to 16%. Includes loading, heating, cooling and unloading time.



PROFIT FROM OUR KNOWLEDGE

OPICO LIMITED
Cherry Holt Road Bourne
Lincolnshire PE10 9LA

Tel: 01778 421111
Fax: 01778 425080
email: ask@opico.co.uk
www.opico.co.uk

SKY-VAC DUST EXTRACTOR FOR A CLEANER WORKING ENVIRONMENT

The SkyVac is a powerful grain cleaner which removes the trash, dust and fines from the grain as it is dried, leaving you with precisely what you want in store - a cleaner better finished sample with a higher hectolitre weight.

With regard to safety and the environment, the new SkyVac is a major inroad into the problem of dust in the atmosphere. You and your staff can now work in a far cleaner, less dusty environment and get the benefits of a better sample at the same time.



SKY VAC for GT DRYER

SKY-VAC IS AVAILABLE TO SUIT BOTH THE GT RANGE OF GAS FIRED DRYERS AND THE MAGNA RANGE OF DIESEL FIRED DRYERS (FACTORY FITTED TO NEW MACHINES)

With SKY-VAC you:

Improve grain quality

- Improve hectolitre weight
- Increase safety when storing your grain
- Reduce the risk of fire as you remove dust and chaff throughout the dryer

Features:

- Easily installed on new or existing dryers
- Anti-static, high density quality tubing & moulded cyclone for a safer, cleaner system
- Single or 3 phase electric drive fan unit
- Fits either horizontal or standard discharge machines



Fitted to horizontal head



PROFIT FROM OUR KNOWLEDGE

OPICO LIMITED
Cherry Holt Road Bourne
Lincolnshire PE10 9LA

Tel: 01778 421111
Fax: 01778 425080
email: ask@opico.co.uk
www.opico.co.uk

PART NUMBER	Description
06DC1	SKY-VAC - factory fitted to new machines
* Specify when ordering	- standard or horizontal discharge head
** Specify when ordering	- single or 3-phase electrics
When a SKY-VAC is fitted the overall height of a machine will increase:	

OPICO's policy is one of continuous improvement and the right to change prices, specifications or equipment at any time without prior notice is reserved

S
K
Y
-
V
A
C