

GT[®]Mfg., Inc.

SKYVAC DUST COLLECTION SYSTEM

OPERATORS MANUAL AND ASSEMBLY INSTRUCTIONS



GT[®]Mfg., Inc.

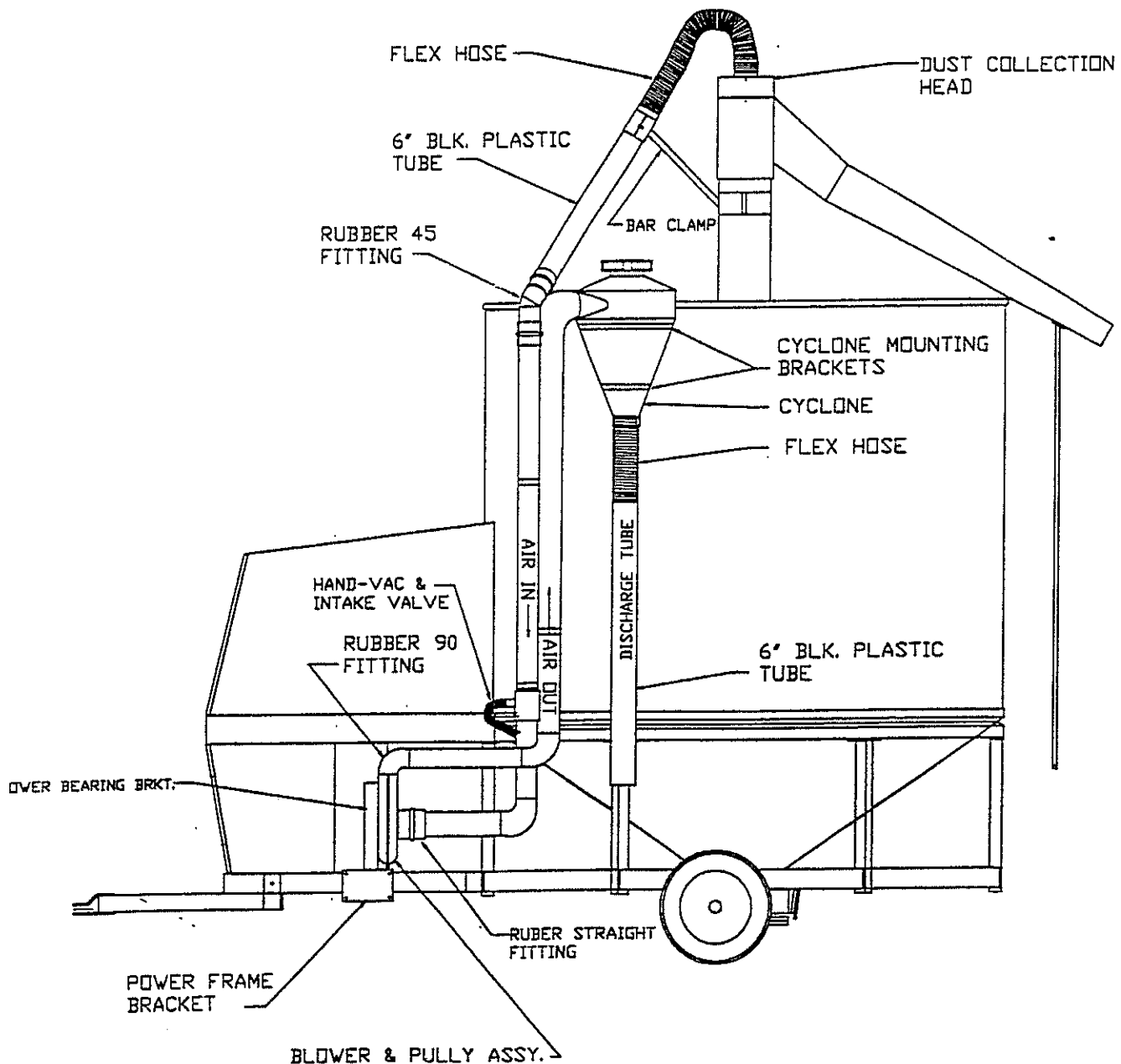
P.O. Box 525 • Clay Center, KS 67432, U.S.A.
(785)632-2151 • (800)423-9428 • FAX (785)632-3308
WWW.GTMFG.COM • gtmfg@kansas.net

SYSTEM DESCRIPTION

The Grain Dust and Fines Collection System was designed to aid in maintaining a cleaner working environment around the grain dryer. The handling of grain creates a large amount of dust and debris. The Collection System will aid in its clean-up.

Air is drawn off of the top of the discharge head and is moved thru plastic tubing to a pressure blower where it is then moved up to a cyclone. In the cyclone, the air spins and the heavier particles drop to the bottom of the cyclone and out the discharge.

The system can also be used as an effective grain vacuum around the dryer. Simply shut the slide gate and use the vacuum wand around your dryer.




GRAIN DUST AND FINES COLLECTION SYSTEM WITH GRAIN VACUUM


SAFETY INSTRUCTIONS


 **KEEP GUARDS IN PLACE!!**


NEVER OPERATE WITHOUT GUARDS IN THEIR PROPER POSITION!!

 **KEEP HANDS, HAIR, and JEWELRY AWAY** from rotating parts and air intakes.

 Make any and all adjustments with the dryer and dust system shut OFF.

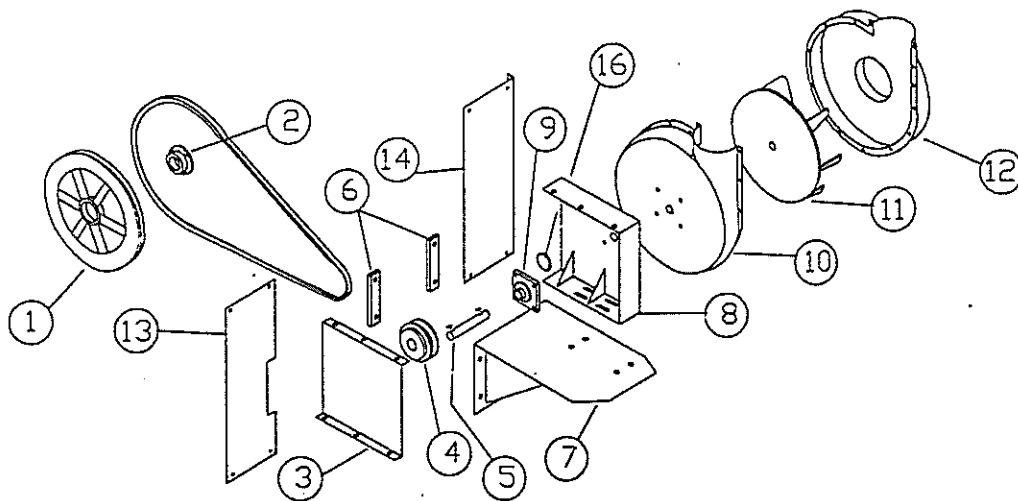
 **DO NOT** allow dust to accumulate in a confined area.

 **DO NOT** use any part of the dust system as a step.

 Use Dust System for grain and grain trash ONLY.

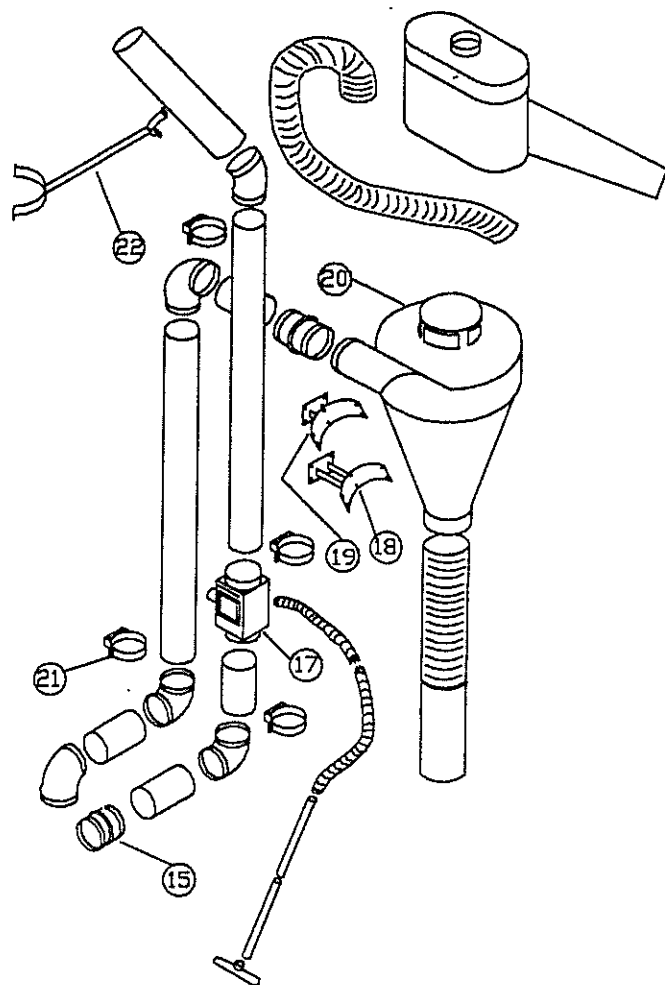
ASSEMBLY INSTRUCTIONS

1. Remove unloading hopper sheave (D59301) from the power shaft (D22161).
2. Place the 18" B-belt sheave (1) on the power shaft, with the bushing towards the end of the shaft. Leave loose.
3. Assemble the fan housing and bearing stand as shown (Parts 4, 5, 8, 9, 10, 11, and 12), making sure the spacer (16) is behind the bearing.



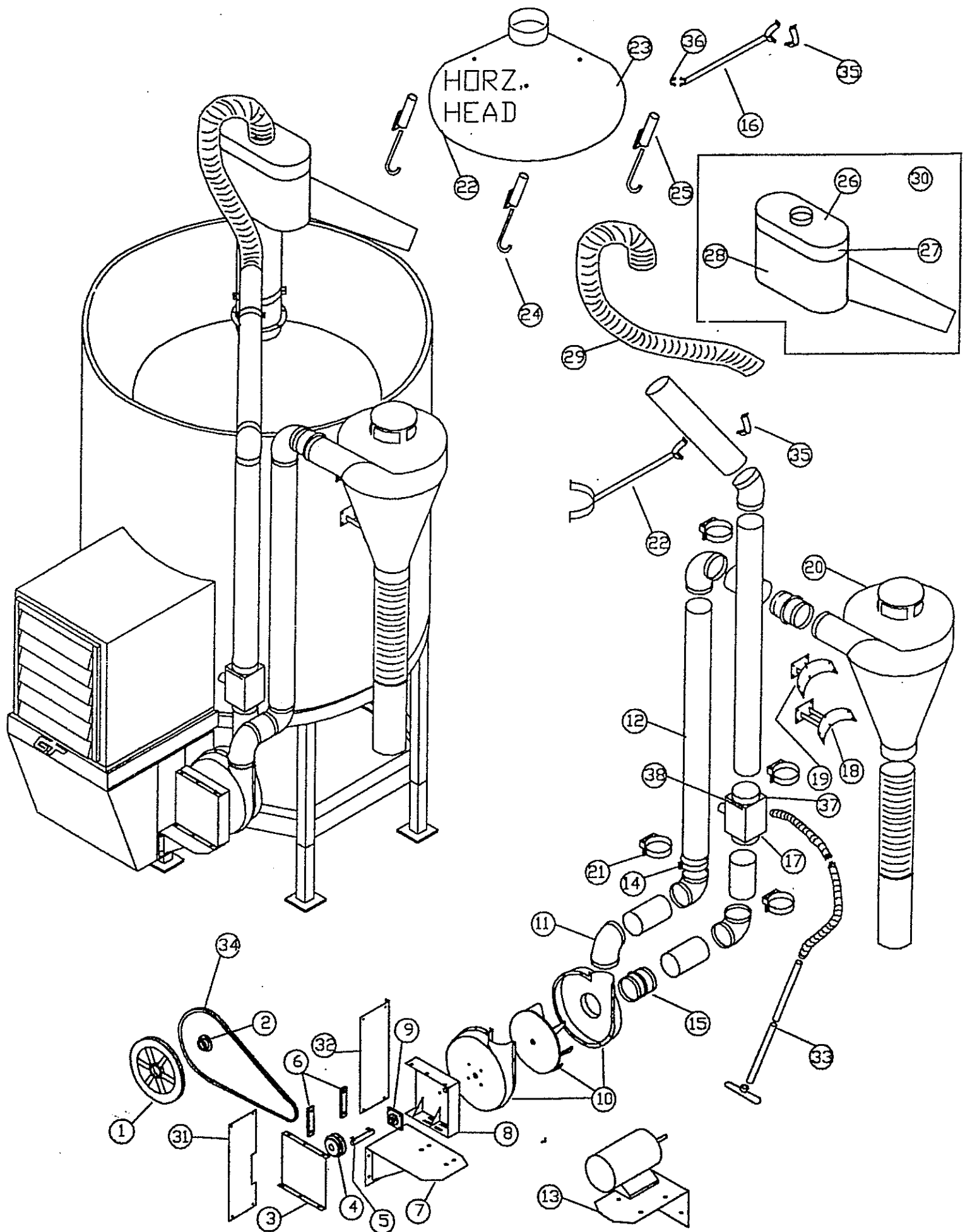
4. Attach the base mounting bracket (7) to the side rail of power frame using four 1/2x4 bolts and brackets (6). Leave loose enough to slide back and forth.
5. Attach fan housing assembly to the mounting bracket (7). Leave loose.
6. Place B88 Belt over 18" sheave and 3" sheave. Align sheaves with straight edge and tighten sheave and bushing (1 & 2) to the power shaft. Check alignment again and tighten base mounting plate (7) to power frame side rail.
7. Pull out on fan housing assembly, tighten belt, and bolt in position. Make sure belt alignment is satisfactory. Replace the unloading hopper sheave (D59301) to the power shaft (D22161).
8. Attach guard (3) to bearing stand (8). Drill and attach panels 13 & 14.

9. Using 6" band clamps, rubber elbows, and 6" plastic tubing, plumb the intake side of the system as shown in the diagram. Use the clamps with mounting bases (21) to secure the system to the side of the dryer. Place the Vacuum/control box (17) just above the transition band on the main frame. It must be on the intake side of the blower housing as shown.
10. Remove the head from the dryer and retro-fit with new head or additional parts as shown. Use support brace (22) to secure plastic tube. Replace head and finish plumbing to the head with the flexible black tubing. Use a sufficient length to allow rotation of the head.
11. Mount the cyclone (20) using the two mounting brackets (18 & 19) at the top of the dryer. Attach left over flex hose and scrap black plastic pipe for a discharge out the bottom. Do Not tightly seal the discharge tube with the container you choose to empty into. Allow air to move out of your discharge container.
12. Plumb from the fan outlet to the cyclone entrance using 6" band clamps, rubber elbows, and 6" plastic tubing.



OPERATING INSTRUCTIONS

1. The system will be running and moving air anytime the P.T.O. shaft on the dryer is turning. To STOP the movement of air, shut the slide gate on the vacuum control box. The blower wheel will still be turning.
2. Use the slide gate to adjust the air flow until the least amount of fine dust is coming out the top of the cyclone.
3. To use the hand grain vacuum, attach the hose to the vacuum control box and shut the slide gate. Grain and trash will be sucked up and moved through the blower and then out the cyclone.



PARTS LIST
Ski-Vac Dust System

<u>No.</u>	<u>Description</u>	<u>Part Number</u>	<u>Quantity</u>
1	Sheave, 18 3/4 B-belt	D60017	1
2	Bushing, H1-1/2	D60018	1
3	Cover, Dust sys. Pully	D52882	1
4	Sheave, 3" B-belt	D60024	1
5	Shaft, fan drive	D59728	1
6	Clamp, Elec. Mtr.	D52720	2
7	Dust Fan Mount	D60029	1
8	Bracket, fan mount	D60030	1
9	Bearing Assembly	D60041	1
10	Fan assembly	D60013	1
11	6" Rubber elbow	D60019	4
12	6" plastic tube, 10 ft.	D60012	3
13	Elec. Fan motor mount	D60037	1
14	Band clamp, 7"	D60016	15
15	Rubber coupling, straight	D60014	4
16	Brace, upper dust tube	D60038	1
17	Valve box	D52887	1
18	Bracket, lower cyclone	D60032	1
19	Bracket, upper cyclone	D60031	1
20	Cyclone	D60010	1
21	Clamp, 6" with feet	D60015	3
22	brace, upper dust tube	D52899	1
23	Cone intake	D60035	1
24	J-bolt	D60039	3
25	Mounting tube	D60036	3
26	Top, dust intake head	D60025	1
27	Cover, dust head extension	D60027	1
28	Side, Dust head	D60028	1
29	Flex-Tube, 6" (per foot)	D60021	13
30	Dust head assembly	D60034	1
31	Panel, Dust Sys. Left	D52881	1
32	Panel, dust sys. Right	D52883	1
33	Vacumm, assembly kit	D60011	1
34	Belt, B88	D52991	1
35	Band, 1/2 6"	41-10038	1
36	Band, 1/2 pelmet	502360	1
37	Box extentsion	D52889	1
38	Slide Gate	D60033	1