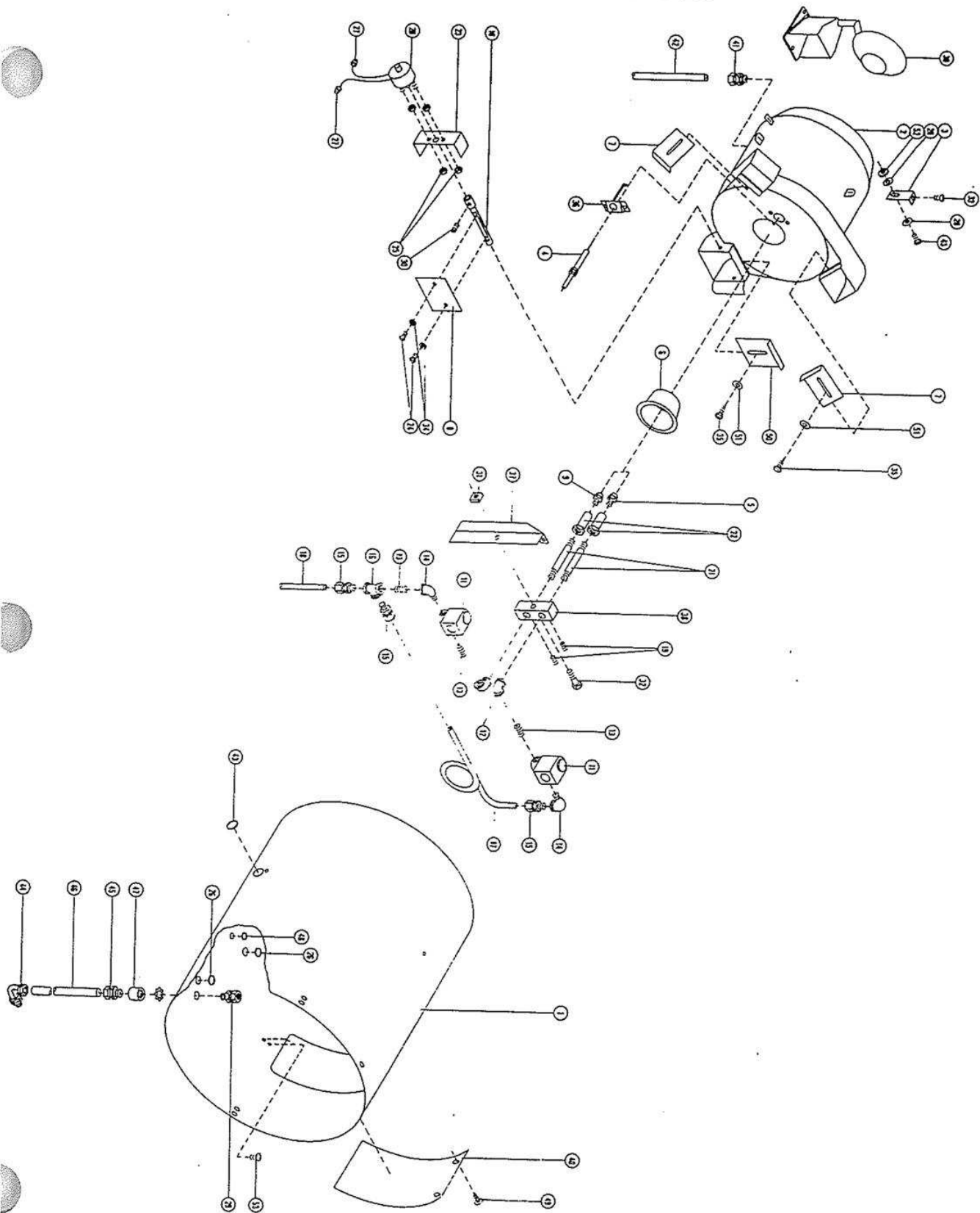


# Micro-Pro Diesel Supplement

02 July 2010  
09:21

# BURNER ASSEMBLY – MODEL 380 & 580



**MODEL 380 - 580  
FUEL OIL BURNER  
BURNER ASSEMBLY**

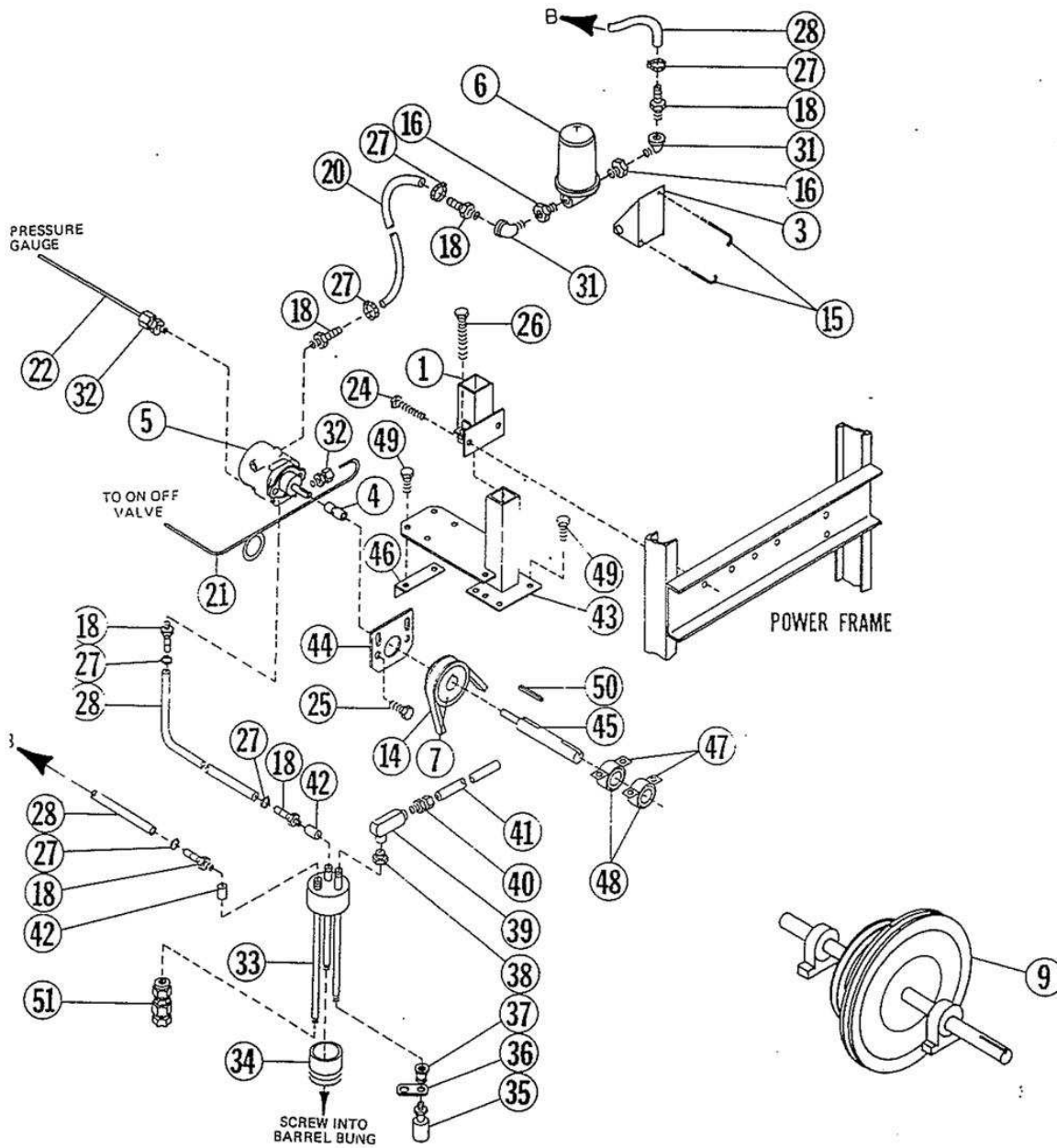
REF. NO.	PART NO.	NO. REQ'D.	DESCRIPTION
1	D32971	1	Tube, 380 F.O.B., Burner
	D52971	1	Tube, 580 F.O.B., Burner
2	D32821	1	Burner, 380 F.O.B.
	D52821	1	Burner, 580 F.O.B.
3	D32870	3	Tab, Burner Mount 380
	D52870	3	Tab, Burner Mount 580
4	77128	1	Electrode
5	D32652	1	Nozzle, 380 Primary - 5 GPH
	D32653	1	Nozzle, 580 Primary - 6 GPH
6	D32721	1	Cone, Burner
7	D32850	2	Gate, 380 Primary Air
	D52850	2	Gate, 580 Primary Air
8	D32830	1	Vane, 380 Butterfly
	D52835	1	Vane, 580 Butterfly
9	D32650	1	Nozzle, 380 Auxiliary - 3 GPH
	D32651	1	Nozzle, 580 Auxiliary - 4 GPH
10	D32841	1	Shaft, 380 Butterfly Vane
	D52841	1	Shaft, 580 Butterfly Vane
11	77187	2	Valve, Solenoid
12	72840	2	Elbow, 1/8" x 90° NPT
13	72760	3	Nipple, 1/8" Close
14	72855	2	Elbow, 1/8" x 90° St. NPT
15	73040	3	Connector, 1/8" MNPT x 1/4" Tube Flex
16	72935	1	Tee, 1/8" x 1/8" x 1/8" NPT
17	D32610	1	Line, Primary Nozzle Feed
18	D32535	1	Line, Valve to Nozzle Feed 380
	D52535	1	Line, Valve to Nozzle Feed 580
19	71471	2	Setscrew, 1/4 - 28 NF x 1/4"
20	77189	1	Solenoid, Rotary Auxiliary Air
21	72764	2	Nipple, 1/8" x 3"
22	D32751	2	Adapter, Nozzle
23	D32855	1	Bracket, Rotary Solenoid Torque 380
	D52855	1	Bracket, Rotary Solenoid Torque 580
24	71641	2	Screw, 8 - 32 x 3/8 Rd. Hd. Slotted
25	72229	2	Nut, 1/4" - 28 NF Hex

# FUEL-OIL BURNER

## PUMP DRIVE ASSEMBLY - MODEL 380

REF. NO.	PART NO.	NO. REQ'D.	DESCRIPTION
1	D22871	1	Mount
3	D32861	1	Mount, Filter
4	D32945	1	Coupler, Pump
	D32948	1	Insert, Coupler
5	D32815	1	Pump, Fuel (Sundstrand)
6	D32280	1	Filter, Fuel
	D32285	1	Element, Replacement Filter
7	D32696	1	Sheave, Pump 1B x 3½" W/1" Bore
9	57001223	1	Sheave, Pump Drive 1B x 15"
14	42-210144	1	Belt, B51
15	001-155	2	J-Bolt 5/16" x 3½"
16	72896	2	Reducer Bushing, ½ x 1 N.P.T.
18	73041	6	Connector, 3/8" Hose x ¼" M.N.P.T.
20	02535	2 ft.	Tube, 3/8" Urebrade x 2 ft. long
21	D32560	1	Line, Valve to Pump Fuel
22	D32905	1	Tube, Pressure Gauge
24	71103	2	Capscrew, ½" x 1¼"
25	71053	2	Capscrew, 3/8" x 1¼"
26	71992	1	Capscrew, ½" x 7" Full Thread
27	78026	6	Clamp, Hose
28	02535	24 ft.	Tube, 3/8" Urebrade x 12 ft. long (Two Req'd.)
31	72856	2	Elbow, ¼" N.P.T. St.
32	73040	2	Connector, ½ Tube x 1/8 M.N.P.T. Flex
33	D32291	1	Fuel Supply Plumbing Assembly
34	D32295	1	Collar, Barrel
35	77180	1	Switch, Liquid Level
36	D32275	1	Spacer Pipe
37	72900	1	Reducer, 1/8 N.P.T. to ¼ N.P.T. Bell
38	72918	1	Reducer, ½ N.P.T. to ¼ N.P.T. Bushing
39	77097	1	Elbow, LB Conduit, 90° x ½"
40	73157	1	Connector, 3/8 Conduit
41	73166	12 ft.	Conduit, 3/8 Liqueatite
42	72637	1	Coupling, ¼" N.P.T.
43	D32711	1	Mount, In Line Pump
44	D32705	1	Plate, Pump Support
45	D32950	1	Jack Shaft, Pump
46	D32715	1	Angle, Pump Mount
47	85005	2	Housing, Bearing
48	85000	2	Bearing, 1"
49	71052	8	Capscrew, 3/8" x 1"
50	42-66057	2	Key, ¼ x ¼ x 1½"
51	74131	1	Valve, ¼" Check

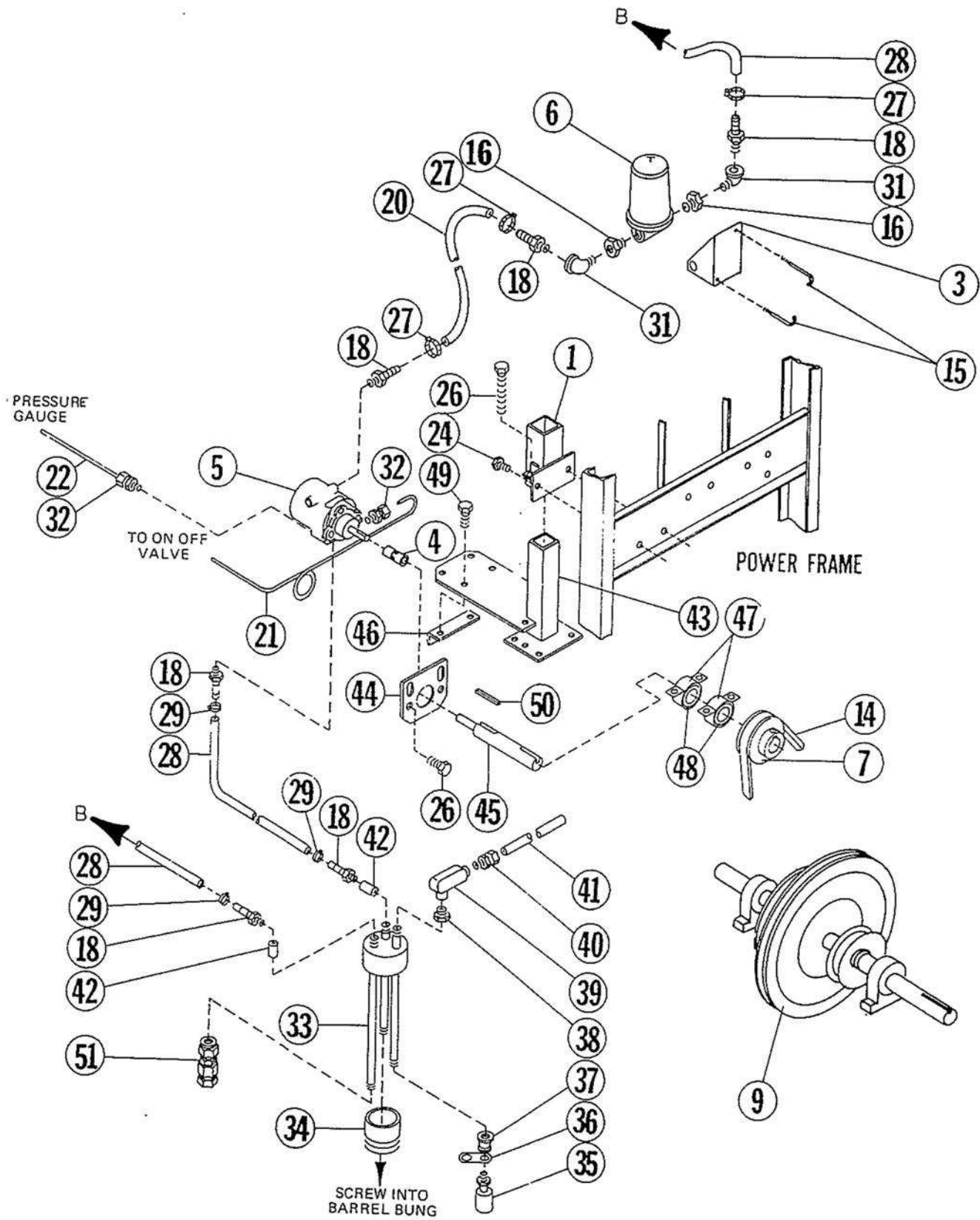
# PUMP DRIVE ASSEMBLY — MODEL 380



MODEL 380 - 580  
FUEL OIL BURNER  
BURNER ASSEMBLY

REF. NO.	PART NO.	NO. REQ'D.	DESCRIPTION
26	73278	2	Grommet, 5/8" I.D. Rubber
27	77093	2	Connector, Solderless 12-18
28	72409	6	Washer, 5/16" Wrought
29	77099	2	Connector, Strain Relief 3/8" I.D.
30	71470	1	Setscrew, 1/4 - 20 NC x 1/4"
31	72292	1	Nut, 1/4" Square
32	71003	1	Capscrew, 1/4 x 1 1/4"
33	71825	6	Screw, 1/4 - 20 x 3/4 Slotted Tr Hd
34	72433	2	Washer, No. 8 Lock
35	72155	7	Screw, 5/16" x 3/4" Hex Hd. Metal
36	D32891	1	Mount, Electrode
37	D32901	1	Bar, Nozzle Mount
38	D32620	1	Block, Nozzle Mount
39	D22682	1	Deflector, Flame - 380
	D52512	1	Deflector, Flame - 580
40	D32640	1	Door, Burner Tube Access
41	73110	1	Connector, 1/4" MNPT x 1/4" Tube Comp.
42	D32540	1	Line, Fuel Drain
43	71027	3	Capscrew, 5/16" x 1"
44	73159	1	Elbow, 3/8" x 90° Liqueatite
45	73157	1	Connector, 3/8" Liqueatite
46	73166	1.5 ft.	Conduit, 3/8" x 18" Liqueatite
47	72677	1	Coupling, 1/2" Pipe
48	73270	1	Grommet, 3/8" I.D. Rubber
49	72089	2	Screw, No. 8 x 1/2" Metal
50	D32625	1	Gate, 380 Auxiliary Air
	D52625	1	Gate, 580 Auxiliary Air
51	72408	3	Washer, 1/4" Wrought
52	72439	3	Washer, 5/16" Lock
53	71683	2	Screw, No. 10 - 24 x 1/2 Mach.

# PUMP DRIVE ASSEMBLY – MODEL 580

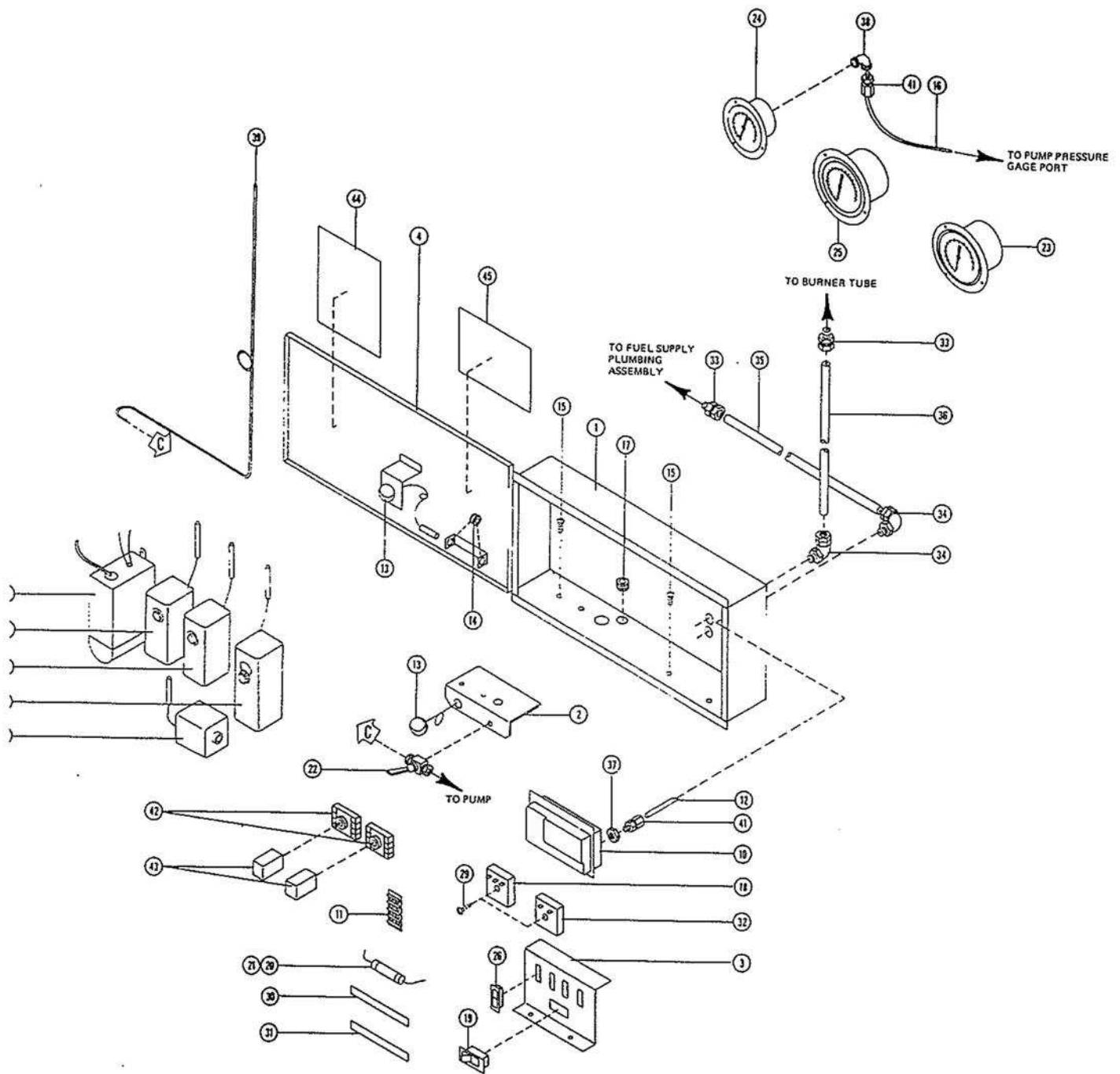


# FUEL OIL BURNER

## PUMP DRIVE ASSEMBLY - MODEL 580

REF. NO.	PART NO.	NO. REQ'D.	DESCRIPTION
1	D22871	1	Mount
3	D32861	1	Mount, Filter
4	D32945	1	Coupler, Pump
	D32948	1	Insert, Coupler
5	D32815	1	Pump, Fuel (Sundstrand)
6	D32280	1	Filter, Fuel
	D32285	1	Element, Replacement Filter
7	D32696	1	Sheave, Pump 1B x 3½" W/1" Bore
9	57001223	1	Sheave, Pump Drive 1B x 15"
14	42-66015	1	Belt, B58
15	001-155	2	J-Bolt 5/16" x 3½"
16	72896	2	Reducer Bushing, ¼ x 1 N.P.T.
18	73041	4	Connector, 3/8" Hose x ¼" M.N.P.T.
20	02535	2 ft.	Tube, 3/8" Urebrade x 2 ft. long
21	D32560	1	Line, Valve to Pump Fuel
22	D32905	1	Tube, Pressure Gauge
24	71103	2	Capscrew, ½" x 1¼"
25	71053	2	Capscrew, 3/8" x 1¼"
26	71992	1	Capscrew, ½" x 7" Full Thread
27	78026	6	Clamp, Hose
28	02535	24 ft.	Tube, 3/8" Urebrade x 12 ft. long (Two Req'd.)
31	72856	2	Elbow, ¼" N.P.T. St.
32	73040	2	Connector, ¼" Tube x 1/8 M.N.P.T. Flex
33	D32291	1	Fuel Supply Plumbing Assembly
34	D32295	1	Collar, Barrel
35	77180	1	Switch, Liquid Level
36	D32275	1	Spacer Pipe
37	72900	1	Reducer, 1/8 N.P.T. to ¼ N.P.T. Bell
38	72918	1	Reducer, ½ N.P.T. to ¼ N.P.T. Bushing
39	77097	1	Elbow, LB Conduit, 90° x ½"
40	73157	1	Connector, 3/8 Conduit
41	73166	12 ft.	Conduit, 3/8 Liqueatite
42	72637	2	Coupling, ¼" N.P.T.
43	D32711	1	Mount, In Line Pump
44	D32705	1	Plate, Pump Support
45	D32950	1	Jack Shaft, Pump
46	D32715	1	Angle, Pump Mount
47	85005	2	Housing, Bearing
48	85000	2	Bearing, 1"
49	71052	8	Capscrew, 3/8" x 1"
50	42-66057	2	Key, ¼ x ¼ x 1½"
51	74131	1	Valve, ¼" Check

# CONTROL CABINET ASSEMBLY – MODEL 380 & 580

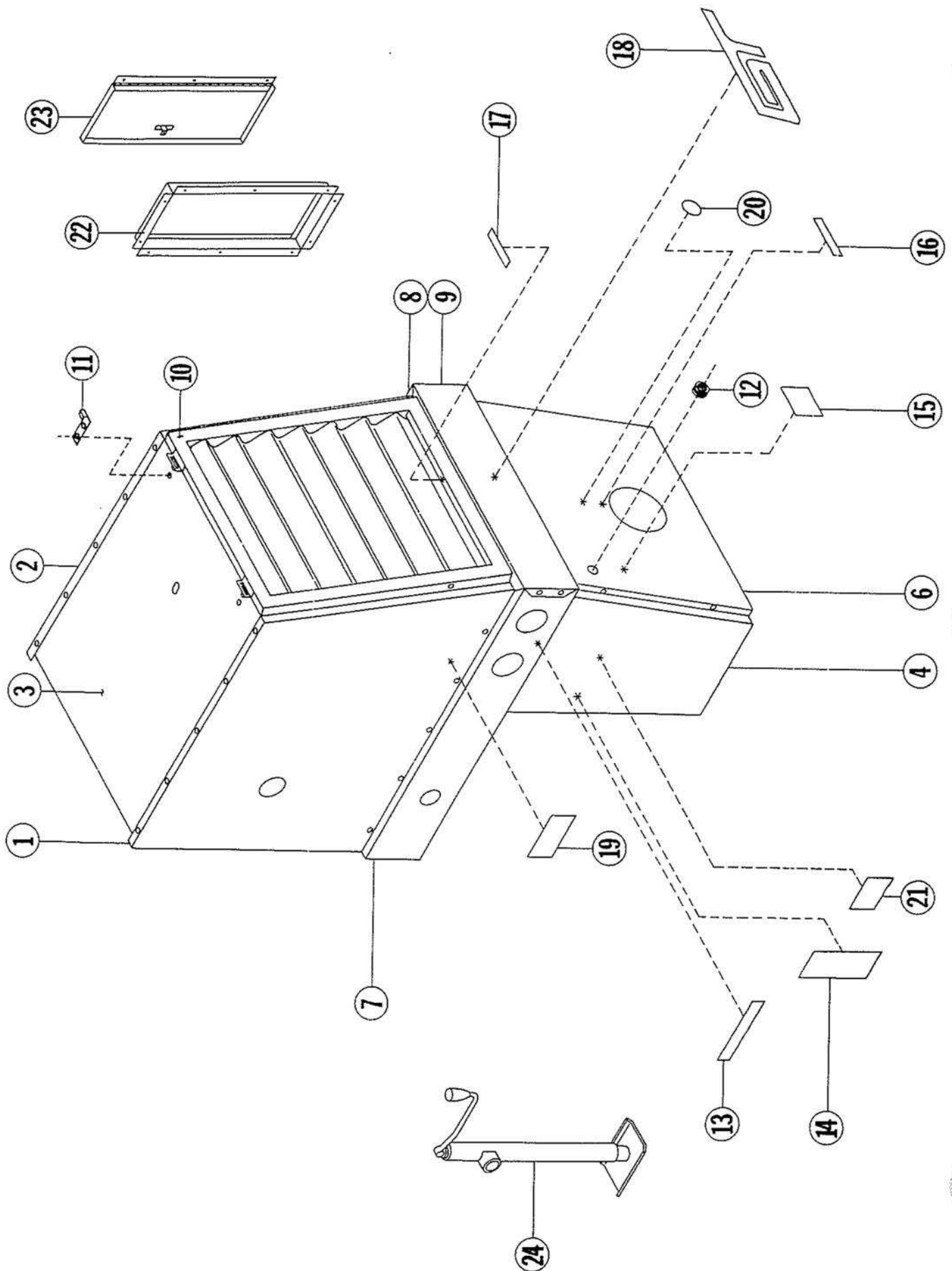


# FUEL OIL BURNER

## CONTROL CABINET ASSEMBLY - MODEL 380 & 580

REF. NO.	PART NO.	NO. REQ'D.	DESCRIPTION
1	D25490	1	Cabinet
2	D32701	1	Mount, Valve
3	D25213	1	Bracket, Switch
4	D25511	1	Door, Cabinet
5	K25021	1	Switch, Plenum High Limit
6	K25231	1	Thermostat, Grain Temperature
7	D25230	1	Thermostat, Auxiliary Burner
8	D25161	1	Pilot, Automatic
9	K55055	1	Coil 12 Volt
	74027	1	Coil Part, Set of Points
10	K25030	1	Switch, Air
11	K25180	1	Block, Terminal
12	D52321	1	Tube, Air
13	73223	2	Light, 12 Volt
14	73271	2	Grommet, 1/4" I.D. Rubber
15	71683	4	Screw, 10 - 24 x 1/2" Slotted Truss Head Machine
16	D32905	1	Tube, Pressure Gauge
17	73278	2	Grommet, 5/8" I.D. Rubber
18	77185	1	Timer, Delay
19	77186	1	Switch, Circuit Breaker
20	77188	1	Holder, Fuse
21	77143	1	Fuse (10 AMP)
22	D32770	1	Valve, On-Off
23	D24123	1	Thermometer, Grain Temperature
24	D32780	1	Gauge, Pressure 0 - 300 P.S.I.
25	D24033	1	Thermometer, Plenum Temperature
26	77162	4	Light, Indicator
27	72035	11	Screw, No. 8 x 1/4" Metal
28	72089	8	Screw, No. 8 x 1/2" Metal
29	72093	2	Screw, No. 8 x 1" Metal
30	74530	1	Decal, Green Indicator
31	74531	1	Decal, Red Indicator
32	77138	1	Timer, 10 Sec.
33	73157	2	Connector, 3/8" Conduit Liqueatite
34	73159	2	Elbow, 3/8" Conduit Liqueatite x 90°
35	73166	12 ft.	Conduit, 3/8" x 12' Liqueatite
36	73166	1.5 ft.	Conduit, 3/8" x 18" Liqueatite
37	72279	1	Nut, U.N.F. Hex Jam
38	72841	1	Elbow, 1/4" N.P.T. x 90°
39	D32535	1	Line, Valve to Nozzle - 380
	D52535	1	Line, Valve to Nozzle - 580
41	73110	2	Connector, 1/4" Tube x 1/4" M.N.P.T.
42	77141	2	Base, Relay, 8 Pin
43	77140	2	Relay, DPDT, 12 VDC, 8 Pin
44	74585	1	Decal, Operating Instructions
45	74577	1	Decal, Wiring Diagram

# 380 & 580 FUEL OIL BURNER POWER UNIT PANELS

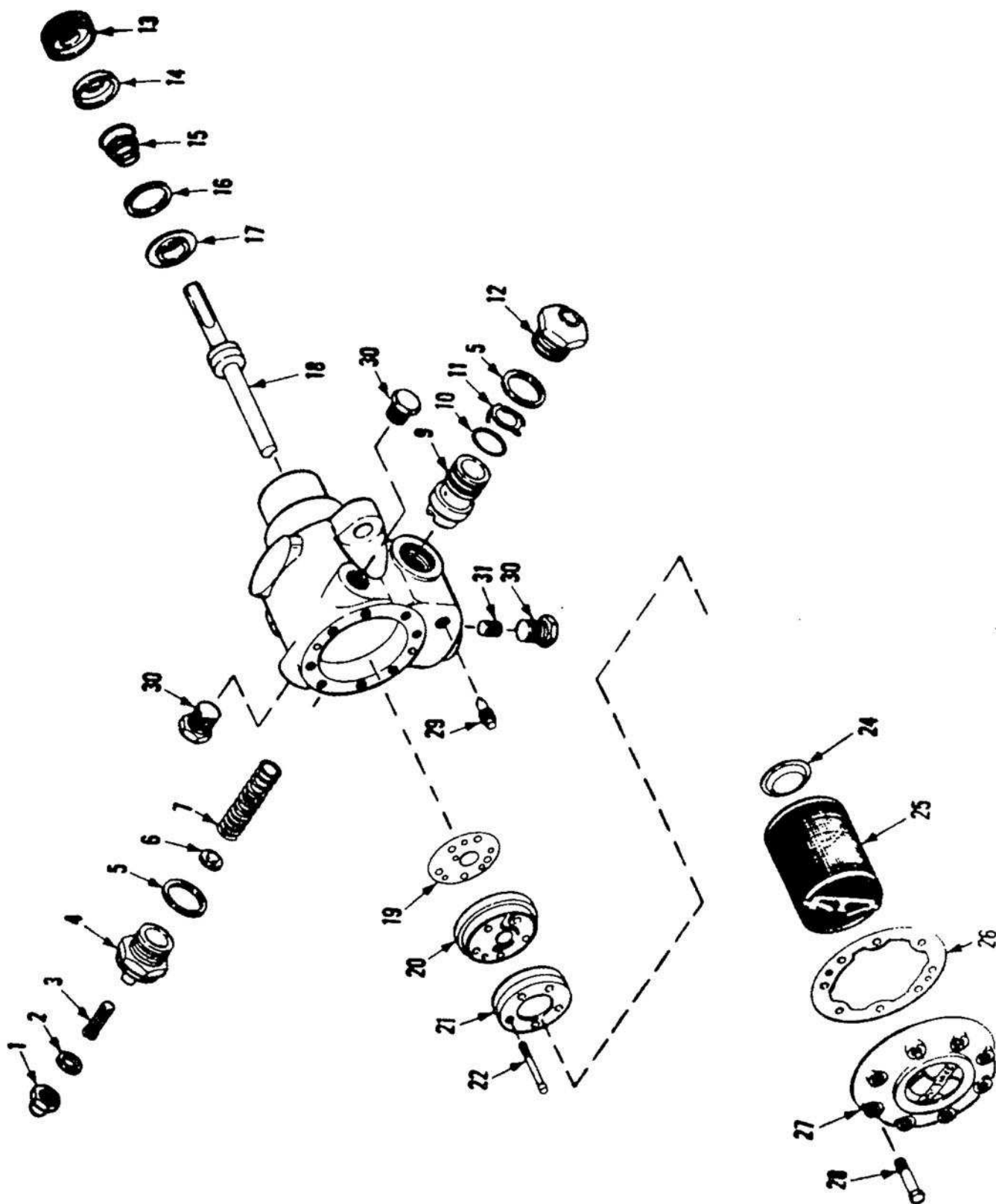


# 380 - 580 FUEL OIL BURNER

## POWER UNIT PANELS

REF. NO.	PART NO.	NO. REQ'D.	DESCRIPTION
1	D22213	1	Panel, Right Fan Guard - 380
	D52663	1	Panel, Right Fan Guard - 580
2	D32600	1	Panel, Left Fan Guard - 380
	D52675	1	Panel, Left Fan Guard - 580
3	D22042	1	Panel, Top Fan Guard - 380
	D52042	1	Panel, Top Fan Guard - 580
4	D32110	1	Panel, Right Belt Guard - 380
	D52885	1	Panel, Right Belt Guard - 580
5	D32100	1	Panel, Left Belt Guard - 380
	D52880	1	Panel, Left Belt Guard - 580
6	D22062	1	Guard, Front Belt - 380
	D52062	1	Guard, Front Belt - 580
7	D32085	1	Panel, Right Gauge - 380
	D52905	1	Panel, Right Gauge - 580
8	D32070	1	Panel, Left Wrapper - 380
	D52130	1	Panel, Left Wrapper - 580
9	D32080	1	Panel, Front Wrapper - 380
	D52900	1	Panel, Front Wrapper - 580
10	D22052	1	Grill - 380
	D52052	1	Grill - 580
11	D32120	2	Strap, Grill Hinge
12	73278	1	Grommet
13	73958	1	Decal, Plenum & Grain Temp.
14	73682	1	Decal, Be a Safe Operator
15	73668	1	Decal, Fan Clutch
16	73607	1	Decal, Max. PTO Speed 540 RPM
17	73631	1	Decal, Max. Fan Speed - 380
	73619	1	Decal, Max. Fan Speed - 580
18	73949	1	Decal, GT Logo
19	73954	1	Decal, Model - 380
	73955	1	Decal, Model - 580
20	73606	1	Decal, FEMA
21	73981	1	Decal, Danger - Electrocution
22	D32590	1	Frame, Side Panel Access Hole
23	D32630	1	Door, Side Panel
24	730020	1	Jack, Swivel

# SUNDSTRAND FUEL OIL PUMP



REF. NO.	SUNDSTRAND PART NO.	PART NO. Available through GT	DESCRIPTION
1	100241		End Cap Nut
2	100371		End Cap Nut Gasket
3	123572		Pressure Adjusting Screw
4	123997		End Plug Assembly
5	100901		End Plug Gasket (2)
6	108051	74129	Spring Seat
7	123591	74130	Pressure Adjusting Spring
9	991352	74125	Piston and Sleeve Assy.
10	25815		"O" Ring
11	121732		Sleeve Retainer
12	109777		Nozzle End Plug Assy.
13	100031		Seal Cap
14	100291		Seal Cup
15	100301		Seal Spring
16	101861		Seal Washer
17	100319HK	74126	Seal Assy. (includes Ref. 16)
18	109757		Shaft Assy.
19	113331		Port Housing Gasket
20	110573		Port Housing
21	112267	74127	End Plate Assy.
22	104671		Gear Set Screws
24	122822		Anti Hum Wafer
25	131129HK	74128	"P" Strainer (includes Ref. 26)
26	110441		Cover Gasket
27	120353		Cover
28	111401		Cover Screw (8)
29	3759231		Bleed Plug
30	3729241		Pipe Plug (3)
31	24800		By Pass Plug