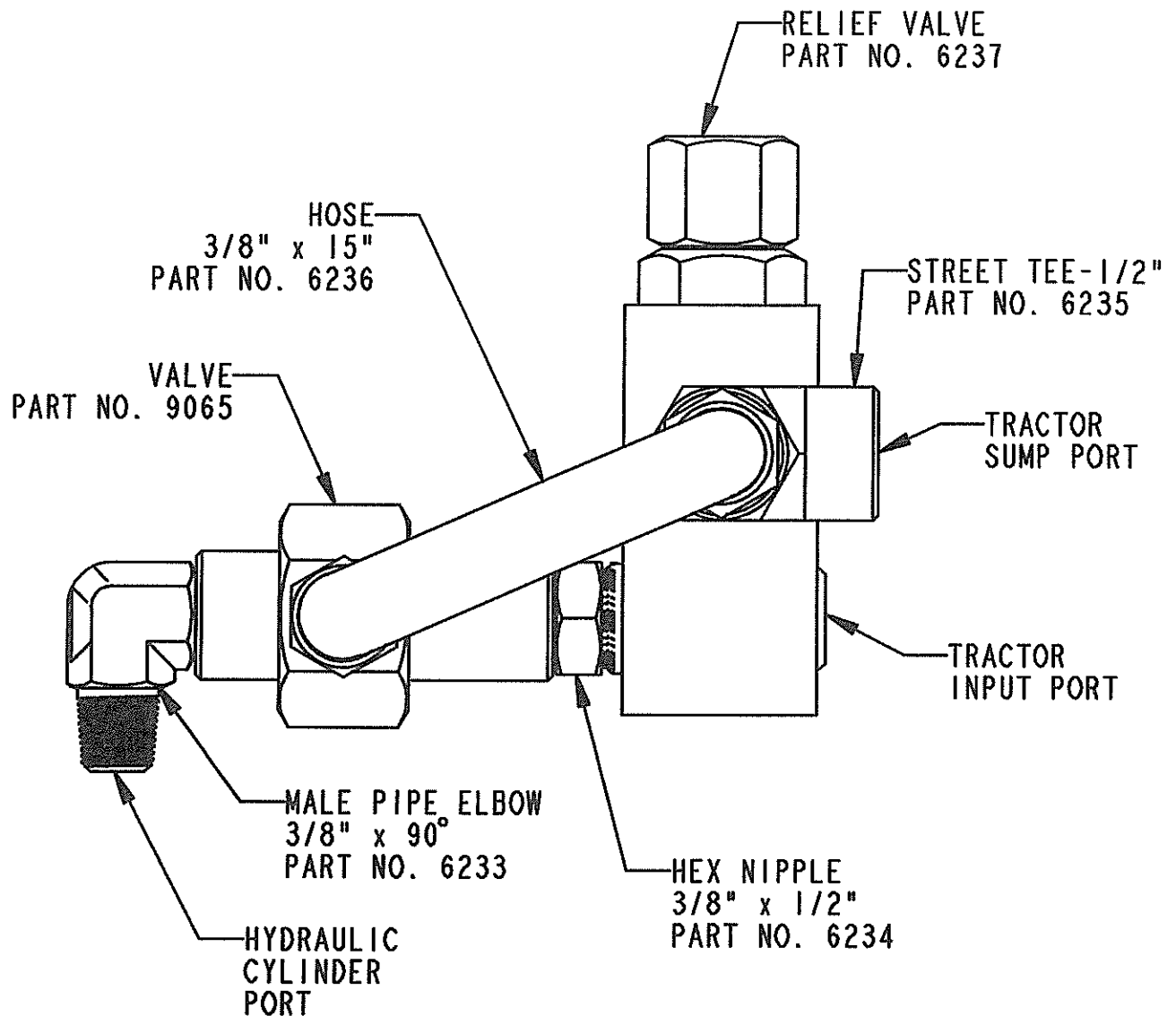


HYDRAULIC VALVE ASSEMBLY

PART NO. 6232



DOWN FORCE KIT 6818 ON DANUSER MODEL J20/80 DIGGER



Refer to the Owner's Manual for safety-related contents concerning digger assembly, installation, and operation.

TRACTOR MUST BE EQUIPPED WITH A 3-WAY OR 4-WAY REMOTE VALVE AND OUTLETS.

- Step 1: Remove the implement from the tractor before beginning any installation.
- Step 2: Remove the pin securing the digger yoke to the digger boom.
- Step 3: Place the cylinder support assembly, PN 6355, over the hitch end of the digger boom.
- Step 4: Position the cylinder support assembly ears over the yoke ears, and secure the cylinder support assembly, yoke, and boom with pin, PN 6230, and retaining rings, PN 2172.
- Step 5: Assemble the upper and lower clamp assemblies, PN 6356 and PN 9070 respectively, loosely to the digger boom using bolts, PN 1582, lockwashers, PN 973, and nuts, PN 1056.
- Step 6: Attach the hydraulic valve assembly's male pipe elbow, PN 6233, to the hydraulic cylinder, PN 9076, using a hydraulic joint sealant, being careful not to cross thread the elbow fitting with the threaded cylinder boss.
- Step 7: Position the hydraulic valve assembly with the input port facing the tractor hitch end of the digger boom.
- Step 8: Attach the digger to the tractor according to the Owner's Manual. Check for clearance between the boom end and your tractor as you raise the digger to the maximum height.
- Step 9: Attach the head end of the cylinder, with elbow and hydraulic valve assembly up, to the upper end of the cylinder support assembly using pin, PN 6354, spacer bosses, PN 6353, and klik pin, PN 1600. Attach the cylinder rod to the boom clamp with pin, PN 9078, and klik pin, PN 1600.
- Step 10: Push the upper end of cylinder support assembly, PN 6355, forward so that the lower end is resting firmly against the yoke. Extend the cylinder approximately 3/4" by sliding the clamp assembly on the boom until the clamp assembly is one inch from the boom rib. Tighten the assembly securely in this position.
- Step 11: Connect the hydraulic hoses (not included) to the hydraulic valve assembly, PN 6232. The connection to the sump can be made at the oil fill, oil level check, breather, or drain opening. However, it is preferred to connect at a point below the oil level.

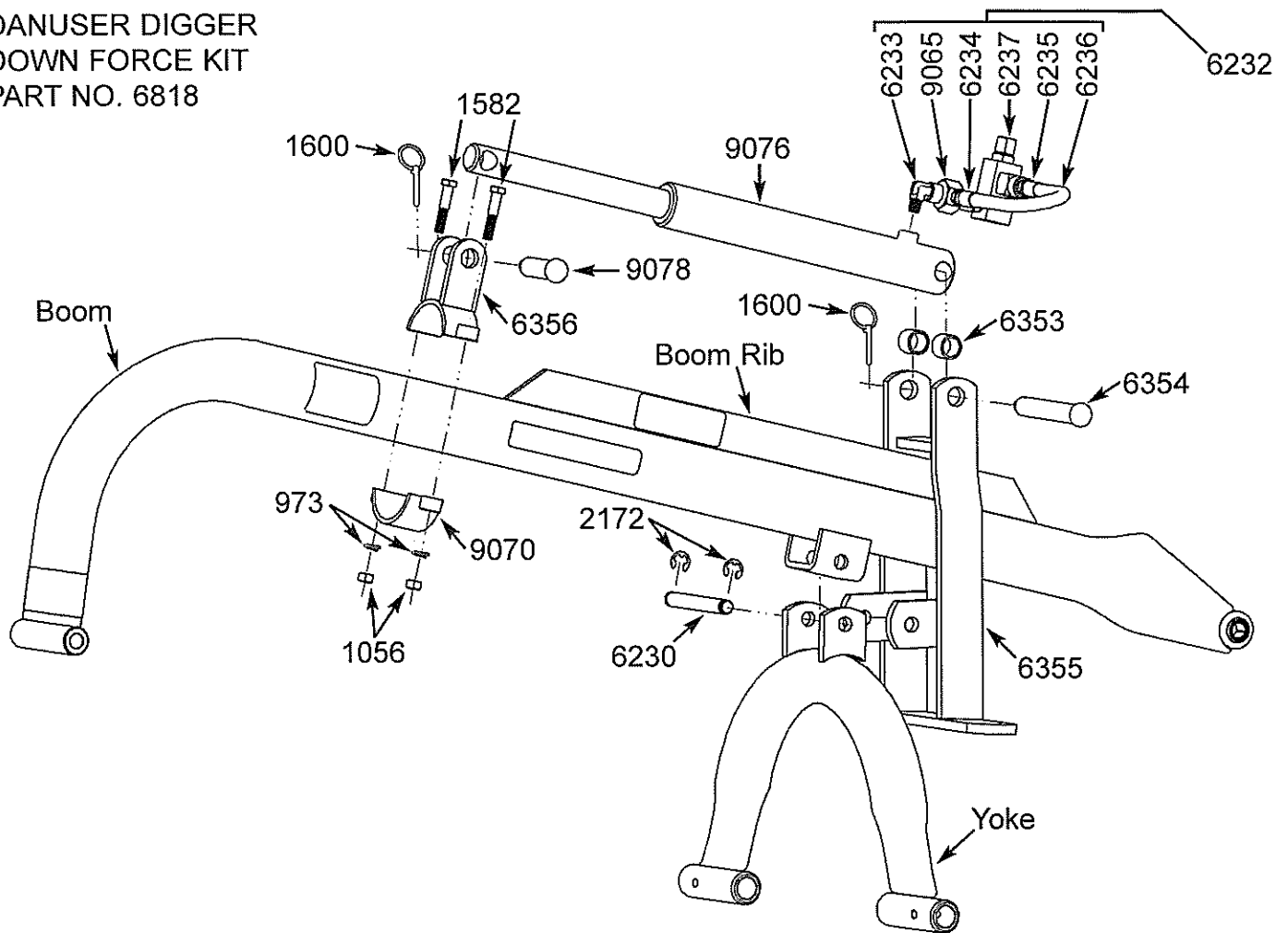
NOTE

The thread for the input port of the hydraulic valve assembly, PN 6232, is a 1/2" NPTF, and the return sump line connection at the street tee of the valve assembly is also 1/2" NPTF.

Down Force Kit Operation

The down force kit provides approximately 500 pounds of additional force to the auger for digging through tough conditions. To apply down force to the auger, move the remote lever in the proper direction to apply pressure to the hydraulic valve assembly. As long as the lever is held in position, force will be applied. When the lever is returned to the neutral position, the down force cylinder is automatically connected to the system sump and the digger can be raised, lowered, and otherwise operated in a normal manner.

DANUSER DIGGER
DOWN FORCE KIT
PART NO. 6818



PART NO.	DESCRIPTION	NO. REQ.
6818	DOWN FORCE KIT includes:	1
9076	Hydraulic Cylinder	1
6232	HYD. VALVE ASSEMBLY includes:	1
6236	Hose (3/8" x 15")	1
6235	Street Tee (1/2")	1
6237	Relief Valve	1
6234	Hex Nipple (3/8" x 1/2")	1
9065	Valve	1
6233	Male Pipe Elbow (3/8" x 90°)	1
6353	Spacer Boss	2
6355	Cylinder Support Assembly	1

PART NO.	DESCRIPTION	NO. REQ.
6354	Clevis Pin (1" x 6-9/16")	1
6230	Yoke Pivot Pin (3/4" x 6-1/8")	1
2172	Retaining Ring	2
6356	Upper Clamp Assembly	1
9070	Lower Clamp Assembly	1
9078	Clevis Pin (1" x 3-5/16")	1
1600	Klik Pin	2
1582	Bolt (1/2"-13 x 2-1/2")	2
973	Lockwasher (1/2")	2
1056	Nut (1/2"-13)	2

IMPORTANT: When ordering parts, please furnish PART NO. and DESCRIPTION